

VOLVO CONSTRUCTION EQUIPMENT MATRIS REPORT

Machine model EC220D	SerialNo 210680	Operating Hours 3007.9	Reading Date 8/22/2018
Company name ALTA EQUIPMENT COMPANY	Dealer	Report Issuer	
Contact name	Technician JOE SINACOLA	Primary Application Site Preparation	
Site	Workorder swo-120520	Ground Condition	

MATRIS Reading, Summary / Recommendation

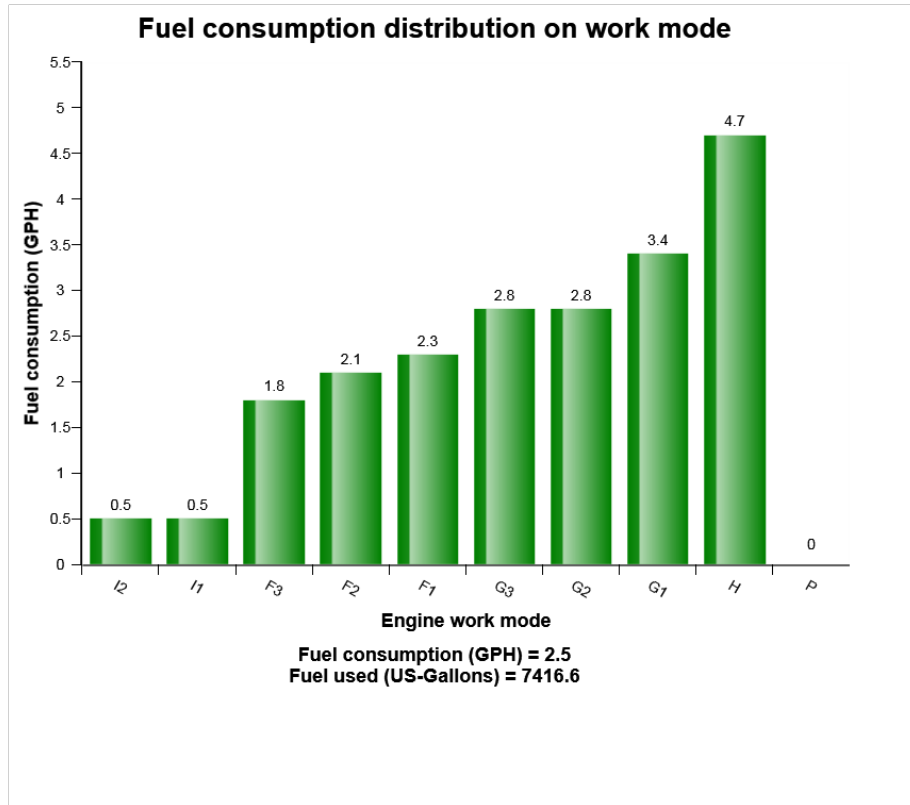


Machine model	SerialNo	Operating Hours	Reading Date
EC220D	210680	3007.9	8/22/2018

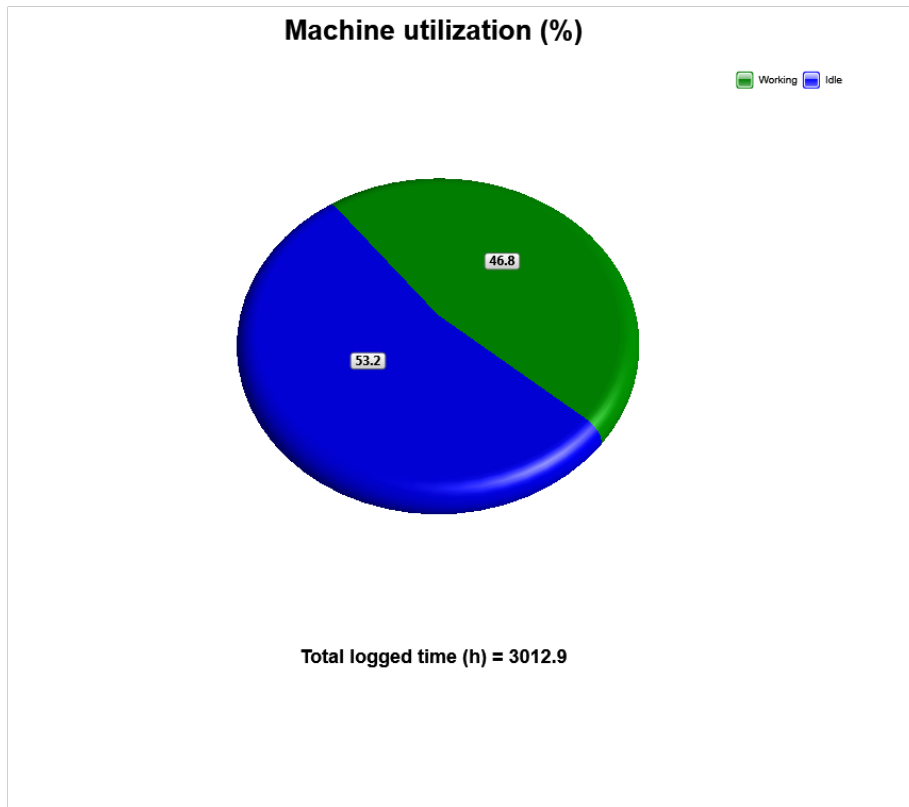
Main equipment	Type	Equipment
	Track chain	
	Hydraulic Fluid	
	Bucket size	
	X3 piping	
	Main Attachment	



Machine model	SerialNo	Operating Hours	Reading Date
EC220D	210680	3007.9	8/22/2018



Machine model	SerialNo	Operating Hours	Reading Date
EC220D	210680	3007.9	8/22/2018



Definition:

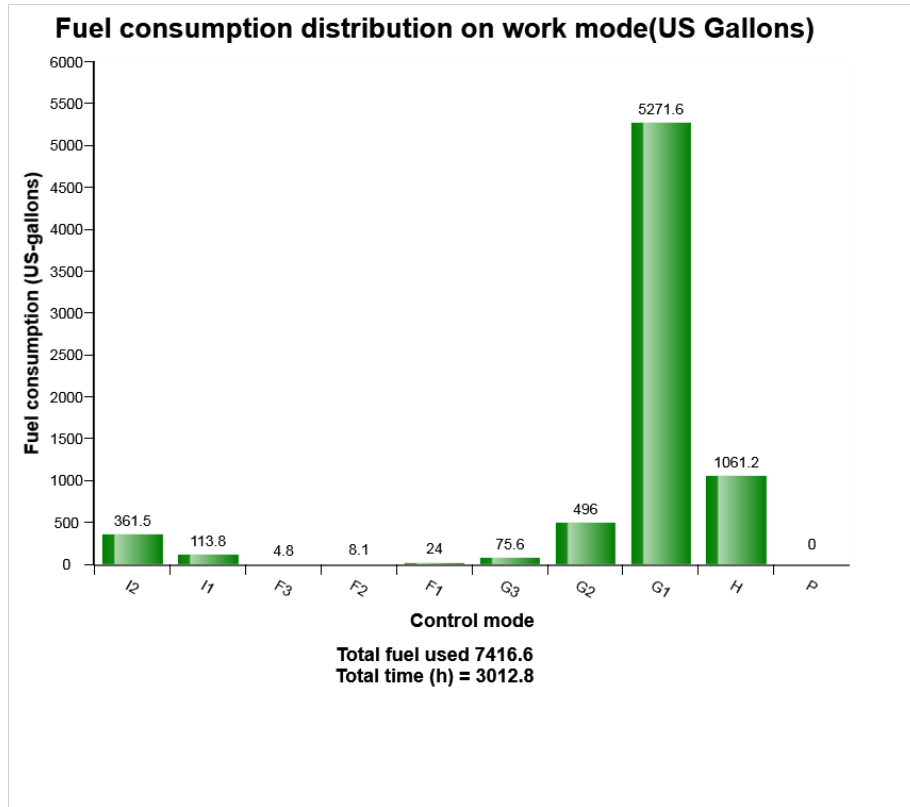
The graph shows the distribution of the operating time for the machine. The operating time is defined as the time with engine on

Blue sector = Engine is running, but attachments and tracks are not moved or operated .

Green sector = Machine in work with the move of attachments and tracks



Machine model	SerialNo	Operating Hours	Reading Date
EC220D	210680	3007.9	8/22/2018



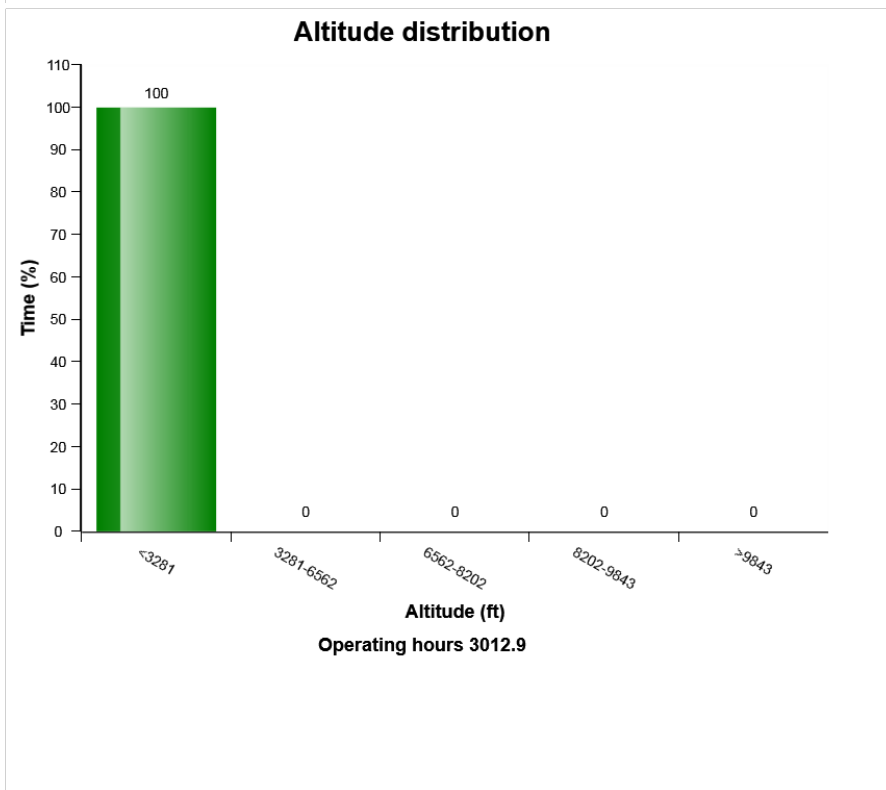
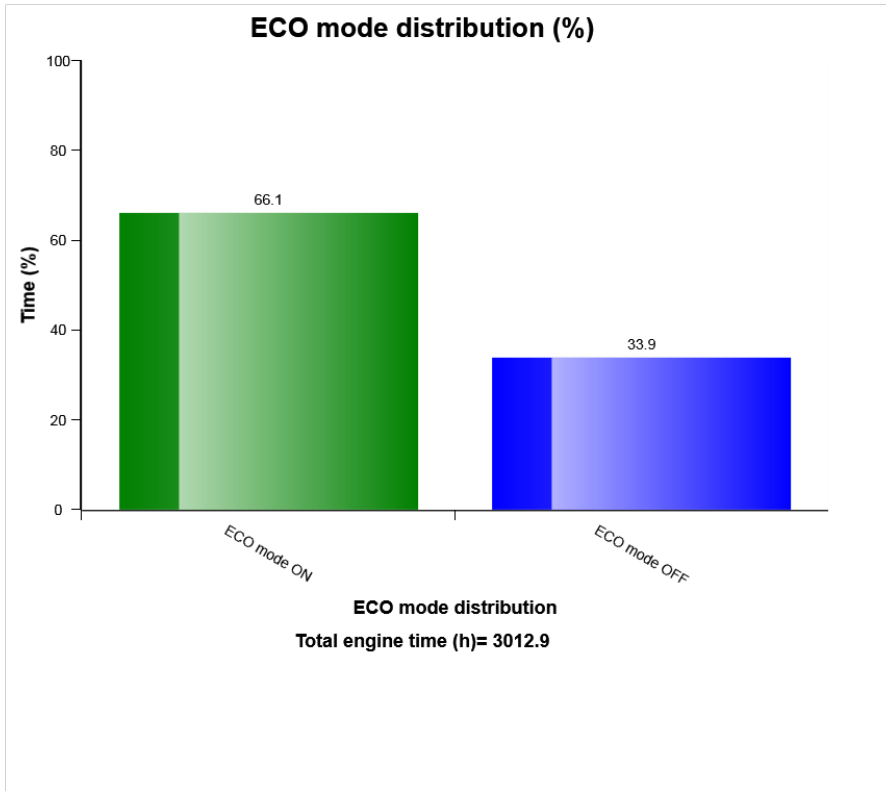
Definition:

The diagram describes the amount of fuel consumed per engine speed mode distribution.

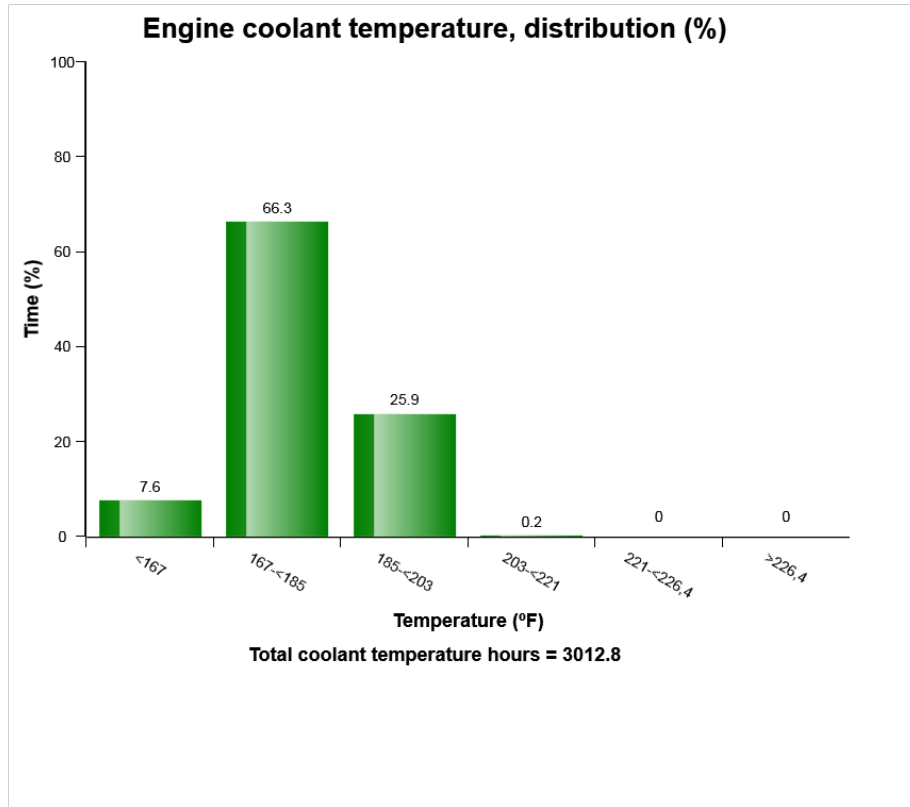
Total amount of fuel consumed (m3) in above means that the sum of the fuel while it consumed for engine ON. The values above distribution were calculated from theoretical calculation with logged data in V-ECU so it can be some different from actual performance in field.



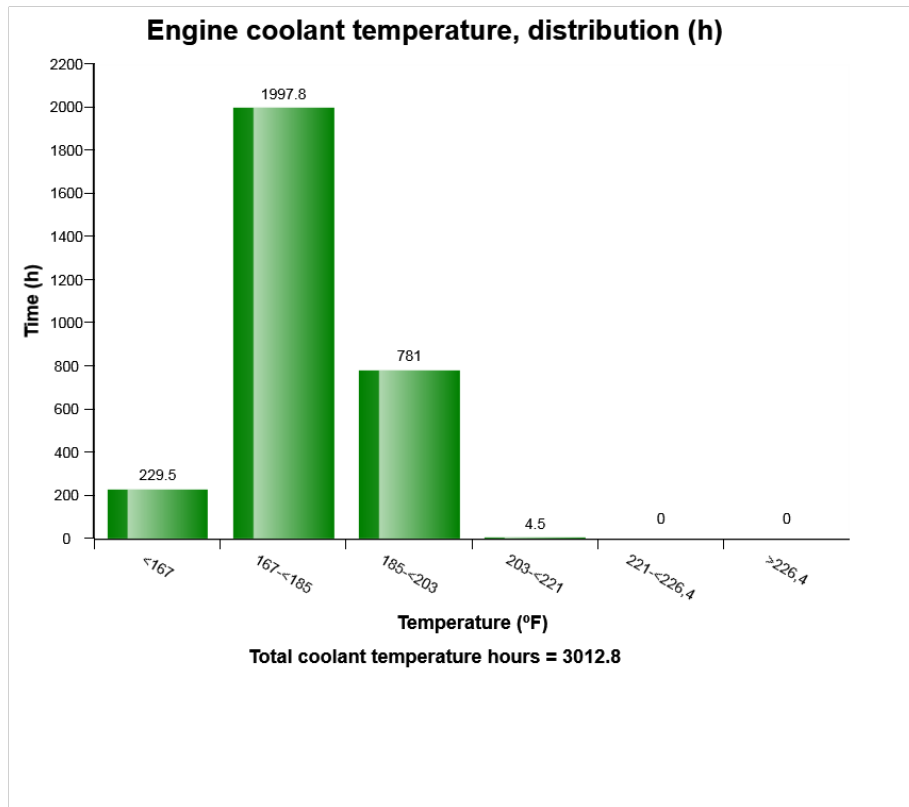
Machine model	SerialNo	Operating Hours	Reading Date
EC220D	210680	3007.9	8/22/2018



Machine model	SerialNo	Operating Hours	Reading Date
EC220D	210680	3007.9	8/22/2018



Machine model	SerialNo	Operating Hours	Reading Date
EC220D	210680	3007.9	8/22/2018



Definition:

The graph shows the time distribution of the temperature, while engine running.

Explanation:

Y-axis: Time

X-axis: Temperature distribution in classes.

Blue bar = Warm-up phase.

During the engine warm-up phase, this temperature region is passed.



Machine model	SerialNo	Operating Hours	Reading Date
EC220D	210680	3007.9	8/22/2018

It is normal to have registrations in this region.

Green bar = Normal working temperature. The Major part of the registrations shall be in this region.

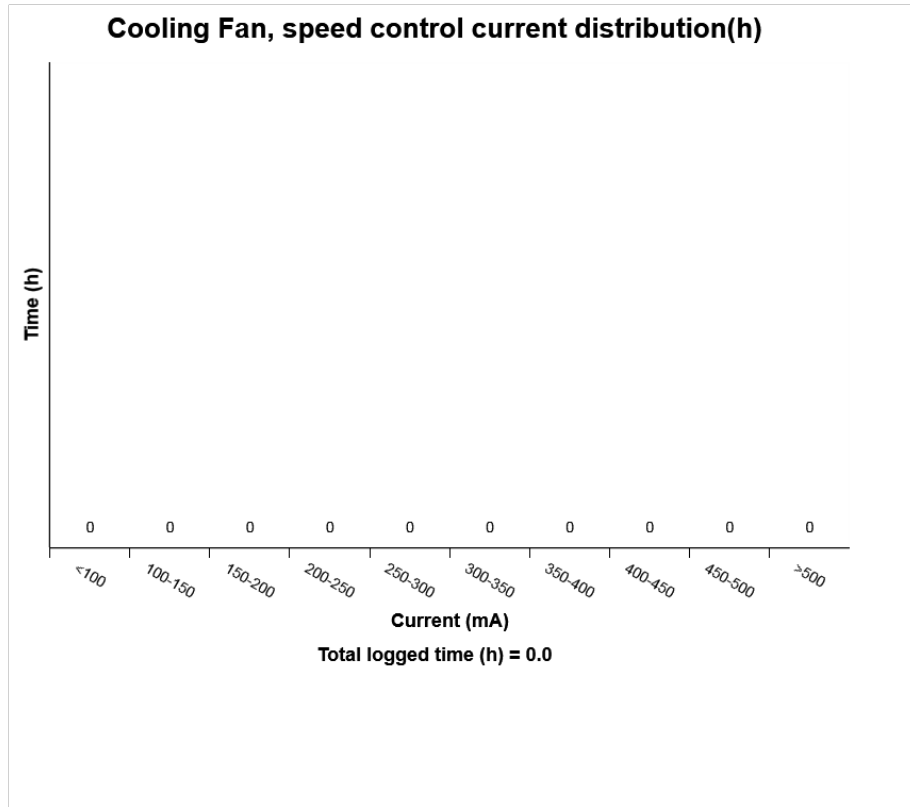
Yellow bar = High working temperature. It is normal to have some registrations in this region.

Red bar = Alarm.

Registrations in this region is not normal, running in this region may cause severe damage.



Machine model	SerialNo	Operating Hours	Reading Date
EC220D	210680	3007.9	8/22/2018



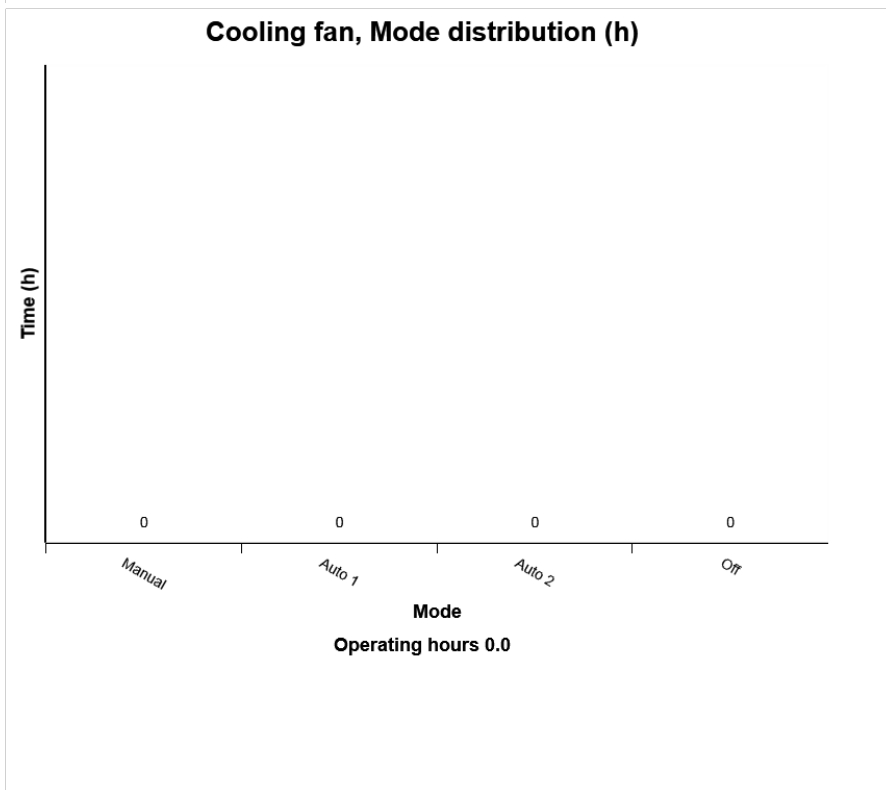
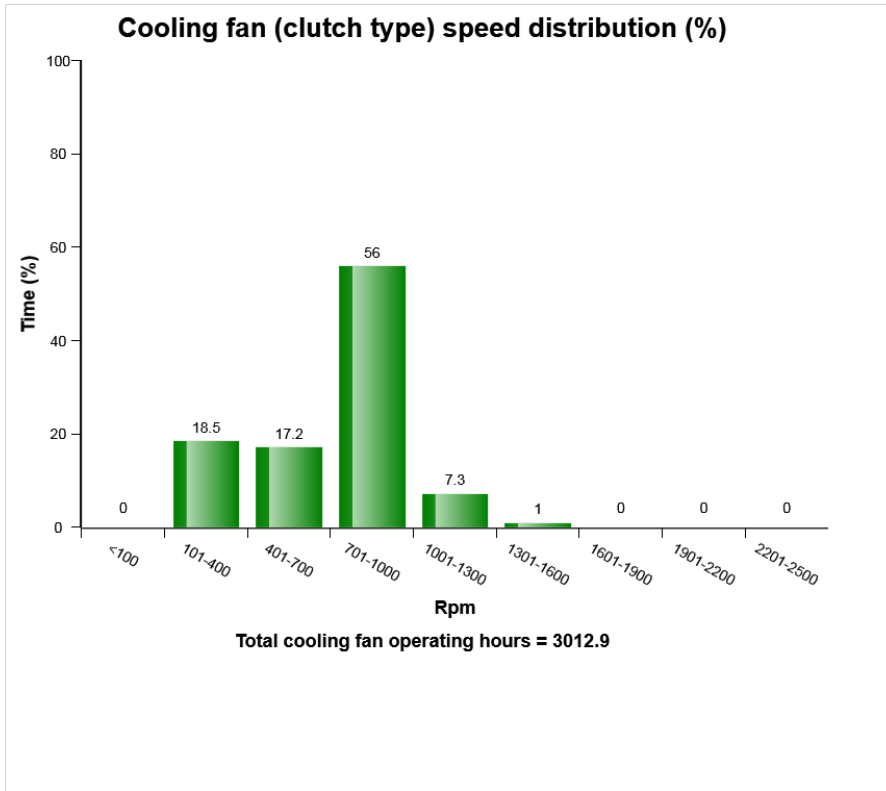
Definition:

The diagram describes Hydraulic Cooling fan speed control, Current (mA) distribution, on fan speed Control..

Total time (hours) in above means the sum of the time for Hydraulic Cooling fan operation.



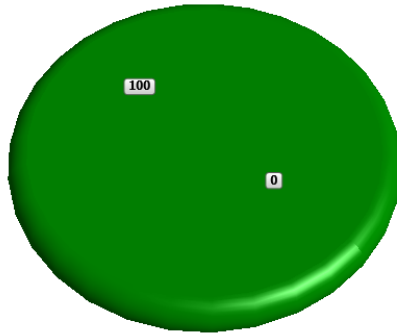
Machine model	SerialNo	Operating Hours	Reading Date
EC220D	210680	3007.9	8/22/2018



Machine model	SerialNo	Operating Hours	Reading Date
EC220D	210680	3007.9	8/22/2018

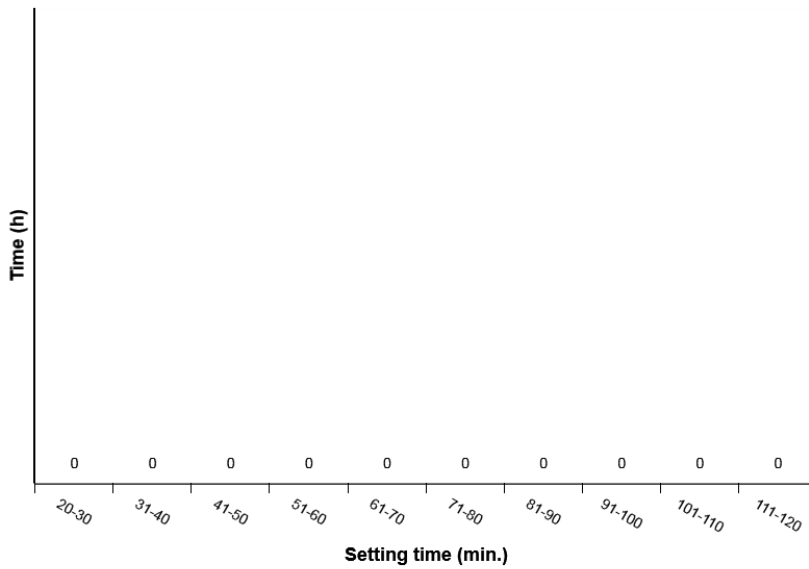
Cooling fan, Normal-Reverse rotation distribution (%)

■ Normal rotation
 ■ Reverse rotation



Total operating time (h) = 3007.0

Reverisble fan, Time setting distribution (h) at Auto 1 mode

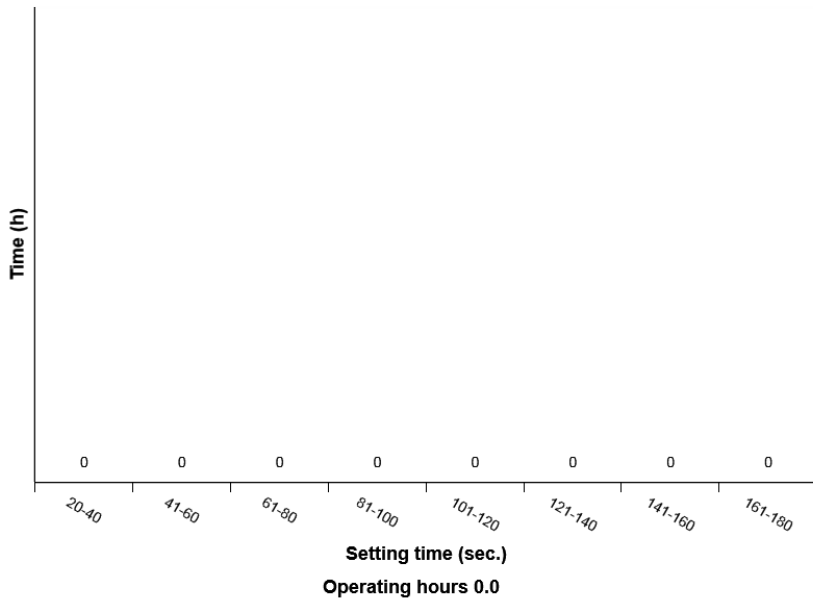


Total operating time at Auto 1 mode (h) = 0.0

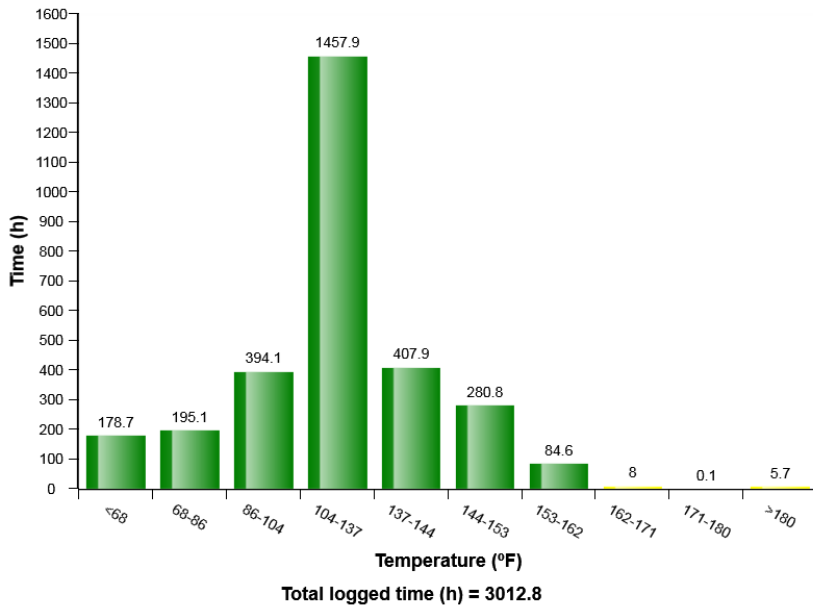


Machine model	SerialNo	Operating Hours	Reading Date
EC220D	210680	3007.9	8/22/2018

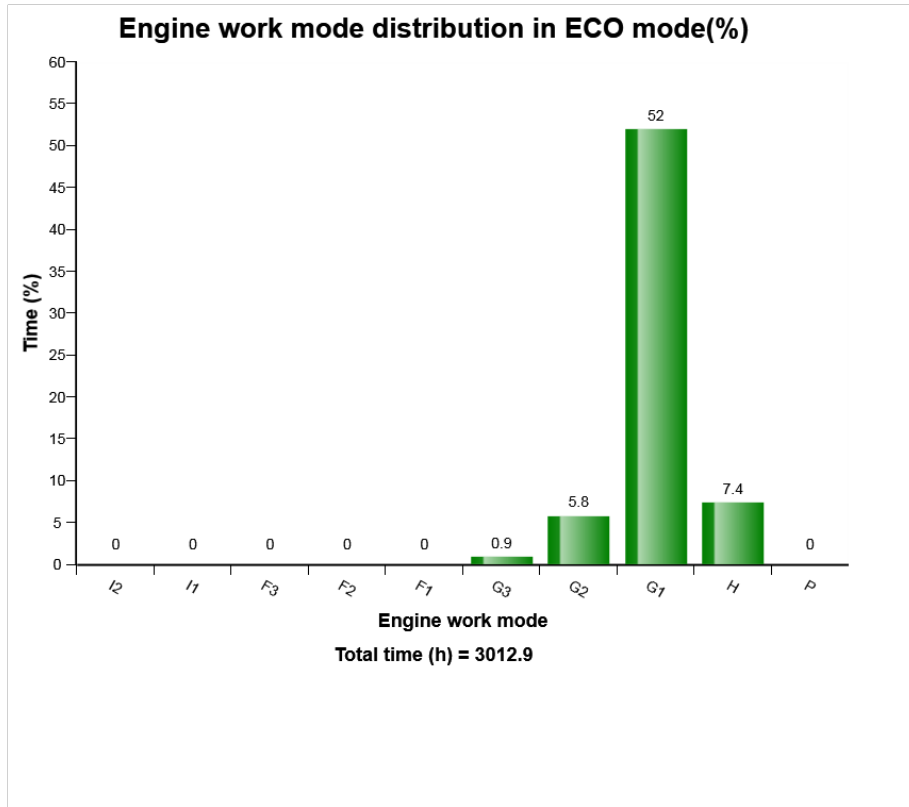
Reversible fan, Time setting distribution (h) at Manual mode



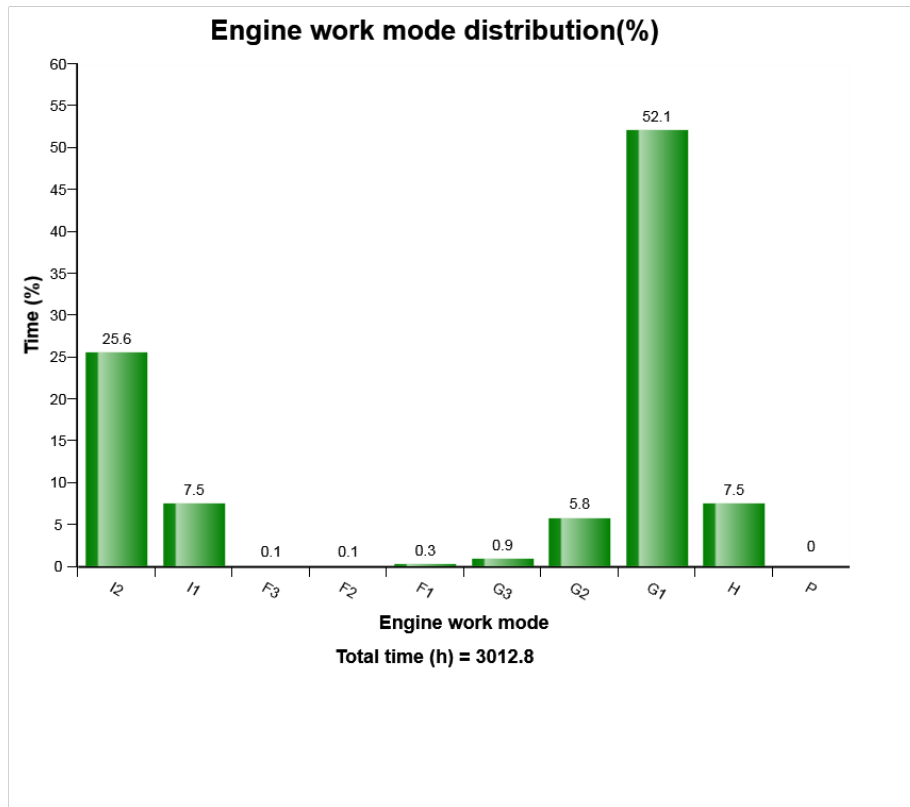
Engine boost air temperature distribution (h)



Machine model	SerialNo	Operating Hours	Reading Date
EC220D	210680	3007.9	8/22/2018



Machine model	SerialNo	Operating Hours	Reading Date
EC220D	210680	3007.9	8/22/2018



Definition:

This diagram shows the distribution of the engine work mode in time percent.

Distribution of each work mode is shown on top of the column in percentage.

Explanation:

Y-axis: The percentage of the operating hours on each work mode.

X-axis: The engine work mode (10 step in total)



Machine model	SerialNo	Operating Hours	Reading Date
EC220D	210680	3007.9	8/22/2018

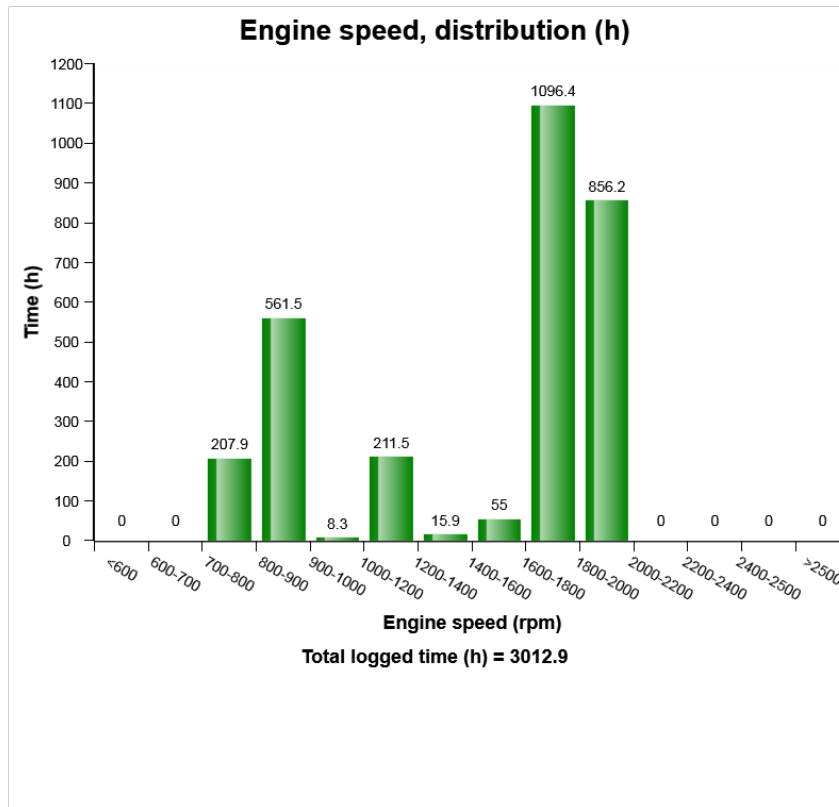
Distribution of each work mode is shown on top of the column in percentage.

The sum of time distribution in percentage is 100

Total time (h) is listed below the diagram



Machine model	SerialNo	Operating Hours	Reading Date
EC220D	210680	3007.9	8/22/2018



Definition:

The graph describes the engine speed distribution, in hours.

The sum of all bars = total time of engine running.

Explanation:

Y-axis: Engine running time in hours.

X-axis: Engine speed in rpm.

Green bars = Normal engine speed range.



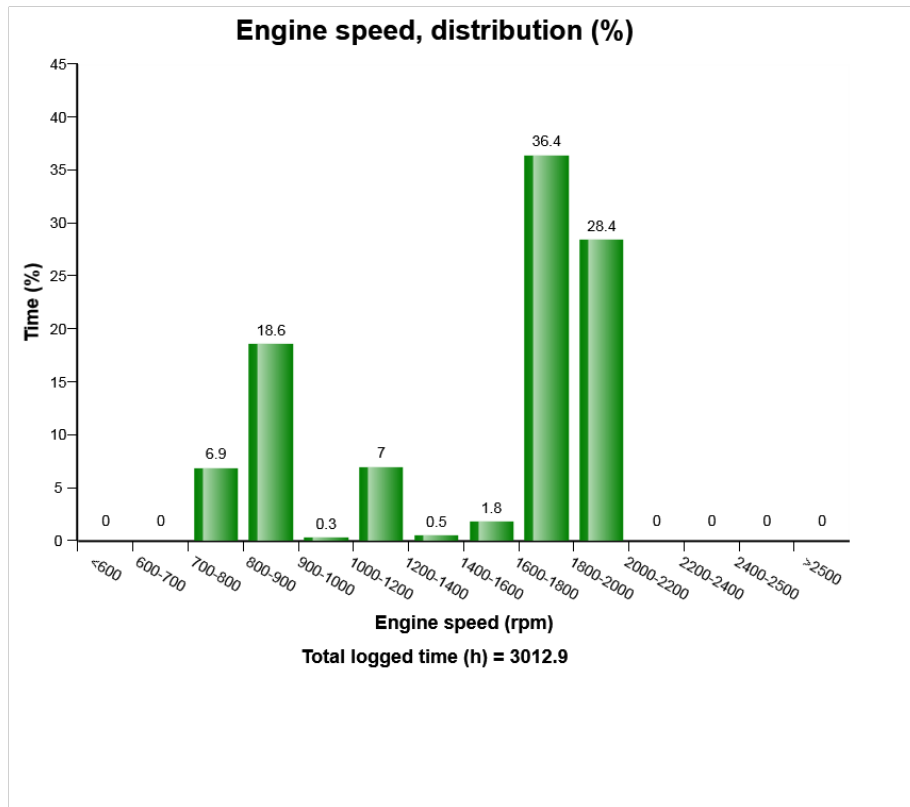
Machine model	SerialNo	Operating Hours	Reading Date
EC220D	210680	3007.9	8/22/2018

Red bars =The engine speed has exceeded the maximum design speed.

Exceeding the maximum design speed may cause severe damage to the engine.



Machine model	SerialNo	Operating Hours	Reading Date
EC220D	210680	3007.9	8/22/2018



Definition:

The graph describes the engine speed distribution in percent of time.

The sum of all bars=100% of engine running time.

Explanation:

Y-axis: Engine running time in percent.

X-axis: Engine speed in rpm.

Green bars = Normal engine speed range

Blue bar = Idling interval.



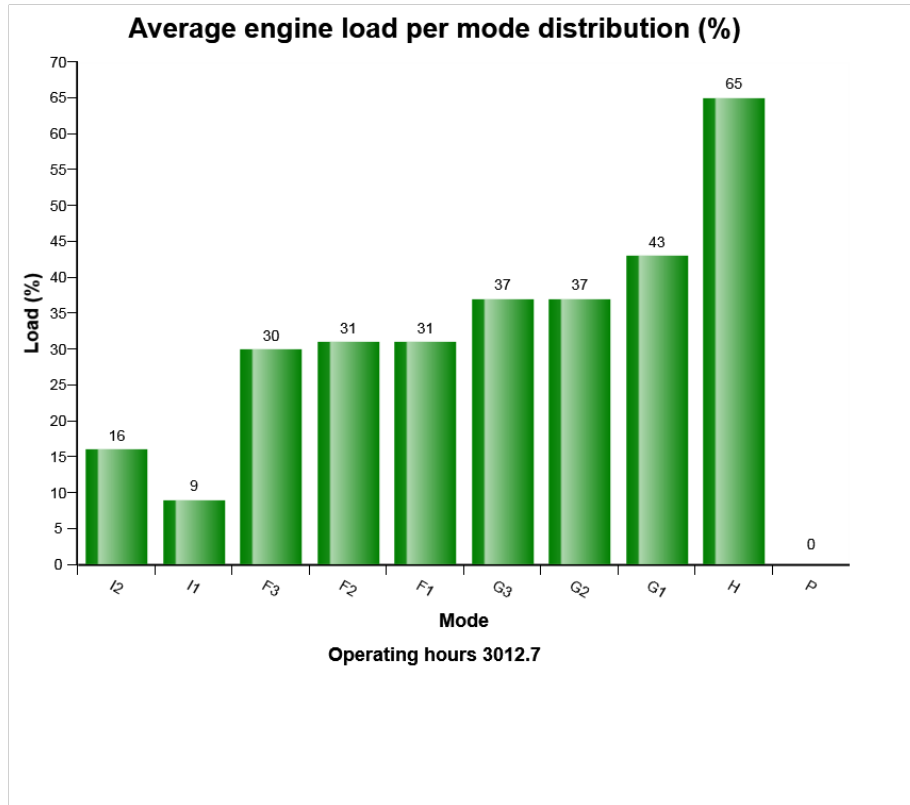
Machine model	SerialNo	Operating Hours	Reading Date
EC220D	210680	3007.9	8/22/2018

Red bars =The engine speed has exceeded the maximum design speed.

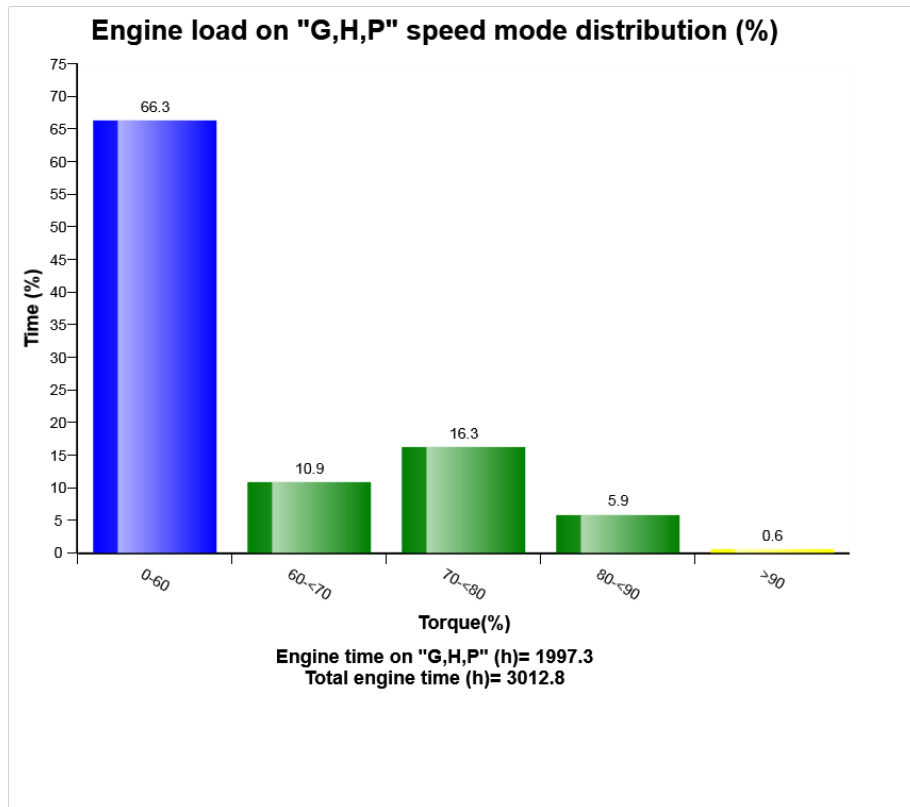
Exceeding the maximum design speed may cause severe damage to the engine



Machine model	SerialNo	Operating Hours	Reading Date
EC220D	210680	3007.9	8/22/2018



Machine model	SerialNo	Operating Hours	Reading Date
EC220D	210680	3007.9	8/22/2018



This graph shows the distribution of the engine load.

Blue bar: Low load

Green bar: Normal load

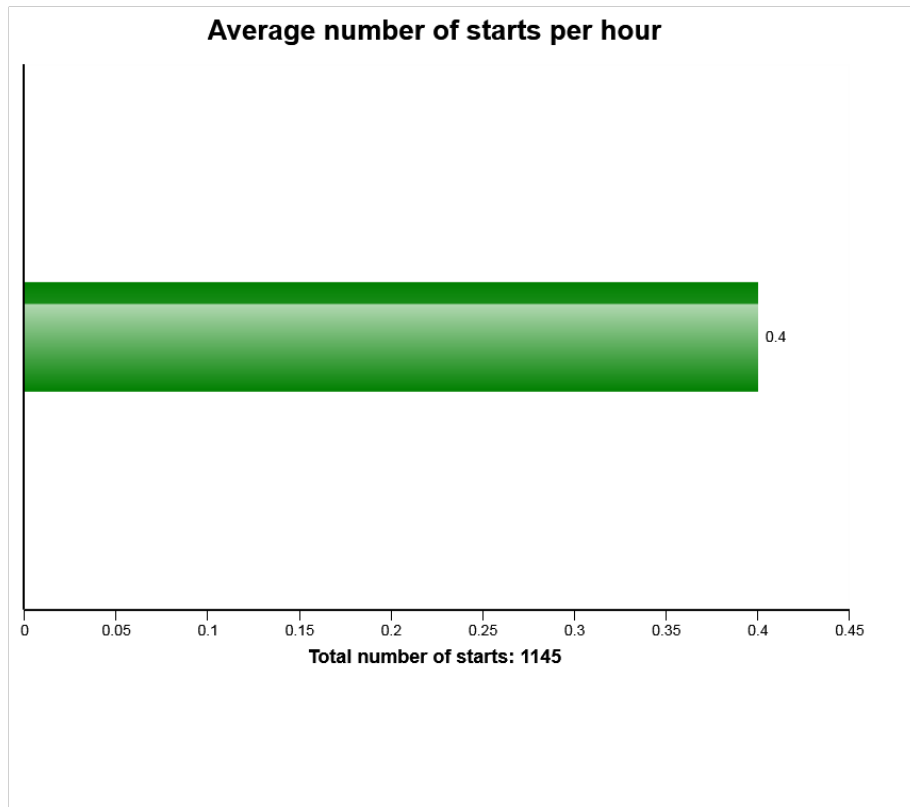
Yellow bar: Excessive load

Load distribution for each bar is shown on top of its column in percentage.

The sum of bars is 100%.



Machine model	SerialNo	Operating Hours	Reading Date
EC220D	210680	3007.9	8/22/2018



Definition:

The graph describes the average number of engine starts per engine running hour.

Explanation:

X-axis: Number of average starts per hour.

The actual time used for calculation, is time with engine on

If the fuel consumption is high one reason may be that the engine is not turned off often enough, perhaps machine is left idling for long periods. Check " Machine utilization".

The value can vary a lot depending on in which application the machine is used.



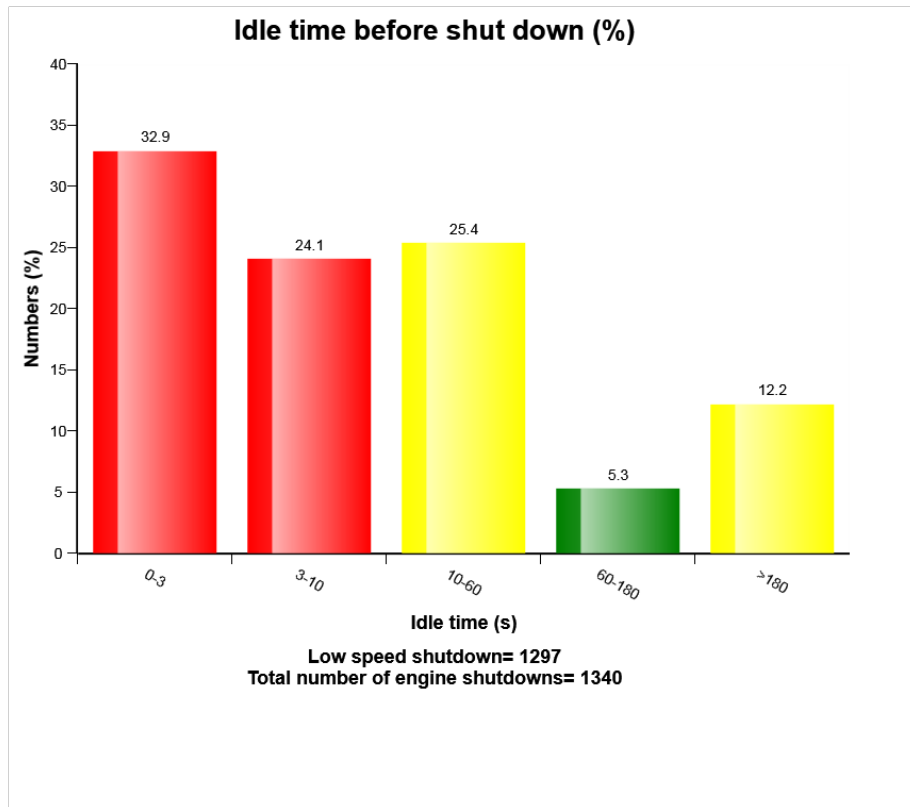
Machine model	SerialNo	Operating Hours	Reading Date
EC220D	210680	3007.9	8/22/2018

To see at which different temperatures engine is started see" Start at different engine temperatures."

Green bar = Number of average starts per hour



Machine model	SerialNo	Operating Hours	Reading Date
EC220D	210680	3007.9	8/22/2018



Definition:

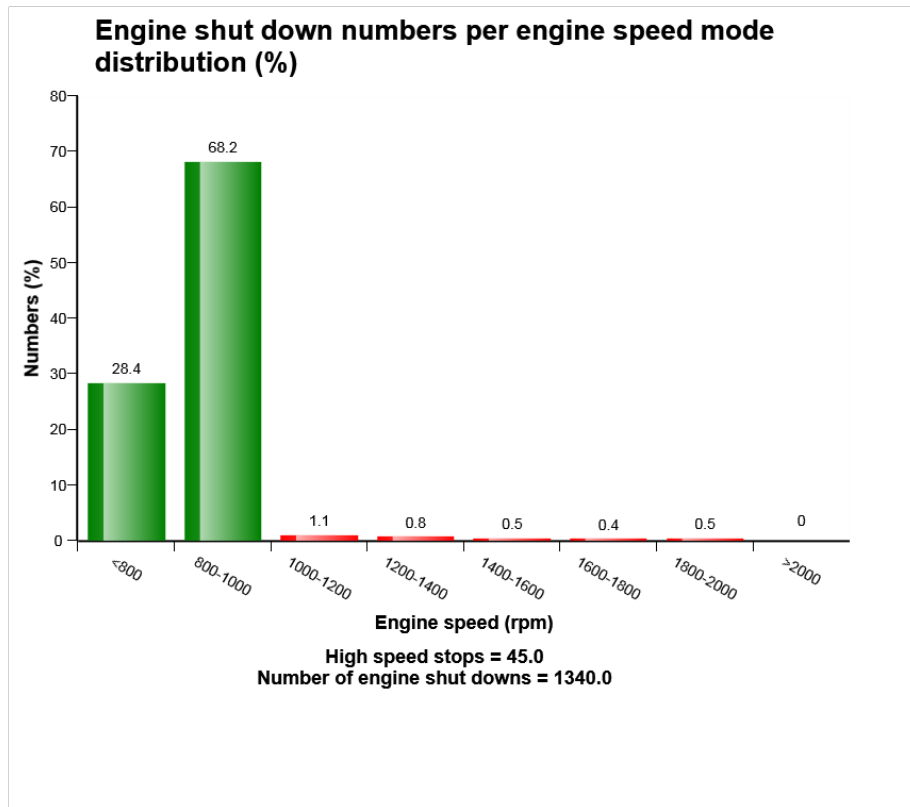
This graph shows the distribution of delayed time at low idle speed until the engine is turned off.

The delayed time distribution for each bar is shown on top of its column in percentage.

The sum of bars is 100%.



Machine model	SerialNo	Operating Hours	Reading Date
EC220D	210680	3007.9	8/22/2018



Definition:

The diagram shows the number of stops at high idle (I1 ~ P mode).

Green bars = Normal engine stop

Red bars = Abnormal engine stop

Engine stops at a high idle can cause server damage to the turbo charger due to shortage of the oil lubrication. The engine should be stopped at low idle(I2 mode).

Explanation:

Y-axle: Number of engine stop at each work mode.



Machine model	SerialNo	Operating Hours	Reading Date
EC220D	210680	3007.9	8/22/2018

X-axle: Work mode.

Distribution of each work mode is shown on top of its column in number.

Total number of shut down is listed below the diagram.



Machine model	SerialNo	Operating Hours	Reading Date
EC220D	210680	3007.9	8/22/2018

hours is displayed in the first column, followed by year, month , day , hour and minute to show when an event has occurred.

The rows are not ordered chronological (The latest event may be in the middle).

Only one event per minute is registered.

Over the table the total number of events is displayed

Duration :

The duration of each event is shown after the timestamp of the event.

The duration is counted as long as the criteria is fulfilled.

Extreme value :

The extreme value column displays the most extreme value during the event.

Criteria :

In order for an occurrence of high engine charge air temperature to be recorded and the count to increment by 1, the engine charge air temperature must change from "normal" to "high." The event of high engine charge air temperature will end when the status changes from "high" back to "normal."



Machine model	SerialNo	Operating Hours	Reading Date
EC220D	210680	3007.9	8/22/2018

Low coolant level
Total number of occurrences = 112

	Op hours	Year	Month	Day	Hour	Minute	Duration (sec)
*	2962	2017	10	19	12	40	61
*	2970	2017	10	23	10	9	276
*	2979	2017	10	25	7	4	455
*	2986	2017	10	26	7	26	886
*	2994	2017	10	27	7	29	1218
*	2998	2017	11	2	12	35	76
*	2998	2017	10	31	9	10	52
*	2998	2017	10	31	9	12	84
*	2998	2017	11	2	12	25	239
*	2998	2006	11	14	15	12	623
*	2998	2006	11	6	10	46	204
*	2998	2017	11	6	11	43	-347158710
*	2998	2017	11	6	9	30	56
*	2998	2017	11	6	8	56	46
*	2998	2017	11	6	8	53	91
*	2998	2017	11	3	7	55	120
*	2998	2006	11	28	11	2	288
*	2999	2007	1	30	7	19	38
*	2999	2007	1	31	0	15	11
*	2999	2007	1	30	7	0	998

Definition :

This type of table shows the latest occasions when a specific event has occurred. When a specified criteria is fulfilled a registration is made. Each table row corresponds to one occasion. Operating



Machine model	SerialNo	Operating Hours	Reading Date
EC220D	210680	3007.9	8/22/2018

hours is displayed in the first column, followed by year, month , day , hour and minute to show when an event has occurred.

The rows are not ordered chronological (The latest event may be in the middle).

Only one event per minute is registered.

Over the table the total number of events is displayed

Criteria :

In order for an occurrence of low engine coolant level to be recorded in a data point, the count to increment by 1 the engine coolant level state must change from "normal" to "low."



Machine model	SerialNo	Operating Hours	Reading Date
EC220D	210680	3007.9	8/22/2018

Low engine oil level at start
Total number of occurrences = 0

Op hours	Year	Month	Day	Hour	Minute
* 0	2000	0	0	0	0
* 0	2000	0	0	0	0
* 0	2000	0	0	0	0
* 0	2000	0	0	0	0
* 0	2000	0	0	0	0
* 0	2000	0	0	0	0
* 0	2000	0	0	0	0
* 0	2000	0	0	0	0
* 0	2000	0	0	0	0
* 0	2000	0	0	0	0
* 0	2000	0	0	0	0
* 0	2000	0	0	0	0
* 0	2000	0	0	0	0
* 0	2000	0	0	0	0
* 0	2000	0	0	0	0
* 0	2000	0	0	0	0
* 0	2000	0	0	0	0
* 0	2000	0	0	0	0
* 0	2000	0	0	0	0
* 0	2000	0	0	0	0
* 0	2000	0	0	0	0
* 0	2000	0	0	0	0
* 0	2000	0	0	0	0
* 0	2000	0	0	0	0
* 0	2000	0	0	0	0
* 0	2000	0	0	0	0
* 0	2000	0	0	0	0
* 0	2000	0	0	0	0
* 0	2000	0	0	0	0
* 0	2000	0	0	0	0
* 0	2000	0	0	0	0
* 0	2000	0	0	0	0
* 0	2000	0	0	0	0
* 0	2000	0	0	0	0

Definition :

This type of table shows the latest occasions when a specific event has occurred. When a specified criteria is fulfilled a registration is made. Each table row corresponds to one occasion. Operating



Machine model	SerialNo	Operating Hours	Reading Date
EC220D	210680	3007.9	8/22/2018

hours is displayed in the first column, followed by year, month , day , hour and minute to show when an event has occurred.

The rows are not ordered chronological (The latest event may be in the middle).

Only one event per minute is registered.

Over the table the total number of events is displayed

Criteria :

In order for an occurrence of low engine oil level to be recorded in a data point and the count to increment by 1, an Alarm shall have been received at start up of machine



Machine model	SerialNo	Operating Hours	Reading Date
EC220D	210680	3007.9	8/22/2018

Fuel Filter Clogging
Total number of occurrences = 0

Op hours	Year	Month	Day	Hour	Minute	Duration (min)
0	2000	0	0	0	0	0
0	2000	0	0	0	0	0
0	2000	0	0	0	0	0
0	2000	0	0	0	0	0
0	2000	0	0	0	0	0
0	2000	0	0	0	0	0
0	2000	0	0	0	0	0
0	2000	0	0	0	0	0
0	2000	0	0	0	0	0
0	2000	0	0	0	0	0
0	2000	0	0	0	0	0
0	2000	0	0	0	0	0
0	2000	0	0	0	0	0
0	2000	0	0	0	0	0
0	2000	0	0	0	0	0
0	2000	0	0	0	0	0
0	2000	0	0	0	0	0
0	2000	0	0	0	0	0
0	2000	0	0	0	0	0
0	2000	0	0	0	0	0
0	2000	0	0	0	0	0
0	2000	0	0	0	0	0
0	2000	0	0	0	0	0
0	2000	0	0	0	0	0
0	2000	0	0	0	0	0
0	2000	0	0	0	0	0



Machine model	SerialNo	Operating Hours	Reading Date
EC220D	210680	3007.9	8/22/2018

Low Air filter pressure
Total number of occurrences = 0

Op hours	Year	Month	Day	Hour	Minute	Duration (sec)
0	2000	0	0	0	0	0
0	2000	0	0	0	0	0
0	2000	0	0	0	0	0
0	2000	0	0	0	0	0
0	2000	0	0	0	0	0
0	2000	0	0	0	0	0
0	2000	0	0	0	0	0
0	2000	0	0	0	0	0
0	2000	0	0	0	0	0
0	2000	0	0	0	0	0
0	2000	0	0	0	0	0
0	2000	0	0	0	0	0
0	2000	0	0	0	0	0
0	2000	0	0	0	0	0
0	2000	0	0	0	0	0
0	2000	0	0	0	0	0
0	2000	0	0	0	0	0
0	2000	0	0	0	0	0
0	2000	0	0	0	0	0
0	2000	0	0	0	0	0
0	2000	0	0	0	0	0
0	2000	0	0	0	0	0
0	2000	0	0	0	0	0
0	2000	0	0	0	0	0

Definition :

This type of table shows the latest occasions when a specific event has occurred. When a specified criteria is fulfilled a registration is made. Each table row corresponds to one occasion. Operating



Machine model	SerialNo	Operating Hours	Reading Date
EC220D	210680	3007.9	8/22/2018

hours is displayed in the first column, followed by year, month, day, hour and minute to show when an event has occurred.

The rows are not ordered chronological (The latest event may be in the middle).

Only one event per minute is registered.

Over the table the total number of events is displayed.

Duration :

The duration of each event is shown after the timestamp of the event.

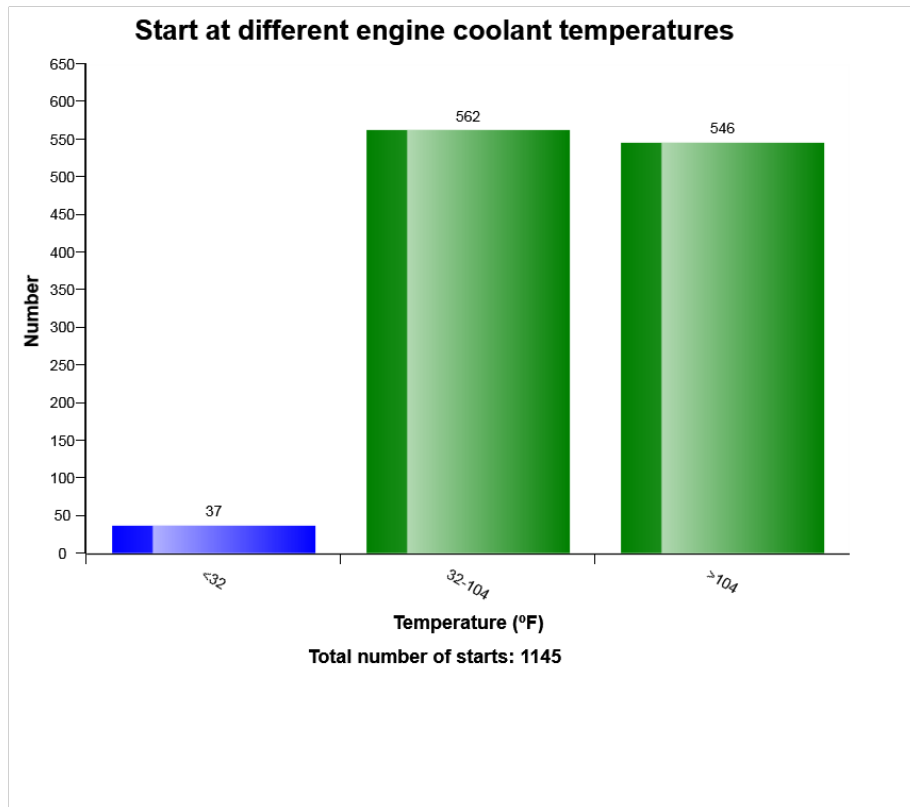
The duration is counted as long as the criteria is fulfilled.

Criteria :

The criteria to get an registration, is that the alarm signal for air filter clogged is active, and that the diesel engine is running.



Machine model	SerialNo	Operating Hours	Reading Date
EC220D	210680	3007.9	8/22/2018



Definition:

The graph shows the distribution of engine coolant temperature, at the starting moment.

Explanation:

Y-axis: Number of engine starts

X-axis: Engine coolant temperature.

A great proportion of engine wear is due to cold starts. Try to avoid extremely cold starts. Try using an electric coolant heater.



Machine model	SerialNo	Operating Hours	Reading Date
EC220D	210680	3007.9	8/22/2018

Under the graph the total number of engine starts is displayed.

Also see " *Number of starts / hour*" to get a complete picture of engine starting.



Machine model	SerialNo	Operating Hours	Reading Date
EC220D	210680	3007.9	8/22/2018

Regeneration ignored
Total number of ignored regenerations 23

Op hours	Year	Month	Day	Hour	Minute	Duration (min)
* 23	2014	11	4	9	26	1
* 23	2014	11	4	9	37	40
* 1049	2016	3	22	13	31	3
* 1049	2016	3	22	13	53	20
* 1049	2016	3	22	16	33	1
* 1049	2016	3	22	16	46	32
* 1700	2016	8	9	9	18	4
* 1700	2016	8	10	9	59	0
* 1867	2016	9	21	14	24	1
* 1867	2016	9	21	14	25	5
* 1867	2016	9	21	14	30	55
* 2027	2016	10	25	7	53	5
* 2027	2016	10	25	11	7	22
* 2718	2017	7	18	13	37	4
* 2718	2017	7	18	9	4	10
* 2718	2017	7	18	13	41	30
* 2719	2017	7	19	10	0	2
* 2719	2017	7	19	10	18	12
* 2719	2017	7	19	12	56	35
* 2719	2017	7	18	14	23	18



Machine model	SerialNo	Operating Hours	Reading Date
EC220D	210680	3007.9	8/22/2018

Regeneration aborted
Total number of occurrences = 31

Op hours	Year	Month	Day	Hour	Minute
1555	2016	6	28	14	49
1700	2016	8	9	9	23
1745	2016	8	19	8	38
1867	2016	9	21	14	24
1957	2016	10	10	12	4
1959	2016	10	10	14	36
2013	2016	10	20	17	16
2026	2016	10	24	16	30
2027	2016	10	25	7	58
2144	2017	1	3	9	38
2182	2017	2	28	12	4
2284	2017	4	13	11	0
2716	2017	7	17	14	41
2717	2017	7	18	8	37
2718	2017	7	18	9	15
2719	2017	7	19	10	30
2719	2017	7	18	14	40
2883	2017	9	27	16	21
2938	2017	10	12	11	55
2957	2017	10	17	15	42



Machine model	SerialNo	Operating Hours	Reading Date
EC220D	210680	3007.9	8/22/2018

Low Engine Oil Pressure
Total number of occurrences = 0

Op hours	Year	Month	Day	Hour	Minute	Duration (sec)	Extreme (psi)
0	2000	0	0	0	0	0	0
0	2000	0	0	0	0	0	0
0	2000	0	0	0	0	0	0
0	2000	0	0	0	0	0	0
0	2000	0	0	0	0	0	0
0	2000	0	0	0	0	0	0
0	2000	0	0	0	0	0	0
0	2000	0	0	0	0	0	0
0	2000	0	0	0	0	0	0
0	2000	0	0	0	0	0	0
0	2000	0	0	0	0	0	0
0	2000	0	0	0	0	0	0
0	2000	0	0	0	0	0	0
0	2000	0	0	0	0	0	0
0	2000	0	0	0	0	0	0
0	2000	0	0	0	0	0	0
0	2000	0	0	0	0	0	0
0	2000	0	0	0	0	0	0
0	2000	0	0	0	0	0	0
0	2000	0	0	0	0	0	0
0	2000	0	0	0	0	0	0
0	2000	0	0	0	0	0	0
0	2000	0	0	0	0	0	0

Definition :

This type of table shows the latest occasions when a specific event has occurred. When a specified criteria is fulfilled a registration is made. Each table row corresponds to one occasion. Operating hours is displayed in the first column, followed by year, month, day, hour



Machine model	SerialNo	Operating Hours	Reading Date
EC220D	210680	3007.9	8/22/2018

and minute to show when an event has occurred.

The rows are not ordered chronological (The latest event may be in the middle).

Only one event per minute is registered.

Over the table the total number of events is displayed

Duration :

The duration of each event is shown after the timestamp of the event.

The duration is counted as long as the criteria is fulfilled.

Extreme value :

The extreme value column displays the most extreme value during the event.

Criteria :

In order for an occurrence of low engine oil pressure to be recorded in a data point and the count to increment by 1, the engine oil pressure state must change from "normal" or "error" to "low." The event of low transmission oil pressure will end when the status changes from "low" back to "normal" or "error."



Machine model	SerialNo	Operating Hours	Reading Date
EC220D	210680	3007.9	8/22/2018

Regeneration duration
Total number of occurrences = 431

Op hours	Year	Month	Day	Hour	Minute	Duration (min)
2937	2017	10	12	11	34	21
2937	2017	10	12	10	57	0
2938	2017	10	12	12	27	28
2947	2017	10	16	8	55	29
2956	2017	10	17	15	15	27
2957	2017	10	18	10	3	29
2966	2017	10	20	9	44	28
2969	2017	10	20	13	49	0
2971	2017	10	23	12	32	0
2972	2017	10	23	15	9	0
2973	2017	10	24	8	50	0
2974	2017	10	24	9	7	0
2975	2017	10	24	10	4	28
2983	2017	10	25	11	15	28
2989	2017	10	26	9	59	0
2991	2017	10	26	13	11	31
2997	2017	10	27	11	6	0
3001	2018	6	5	11	35	0
3003	2018	6	21	8	37	30
3006	2018	6	21	14	0	30



Machine model	SerialNo	Operating Hours	Reading Date
EC220D	210680	3007.9	8/22/2018

hours is displayed in the first column, followed by year, month, day, hour and minute to show when an event has occurred.

The rows are not ordered chronological (The latest event may be in the middle).

Only one event per minute is registered.

Over the table the total number of events is displayed.

Duration :

The duration of each event is shown after the timestamp of the event.

The duration is counted as long as the criteria is fulfilled.

Extreme value :

The extreme value column displays the most extreme value during the event.

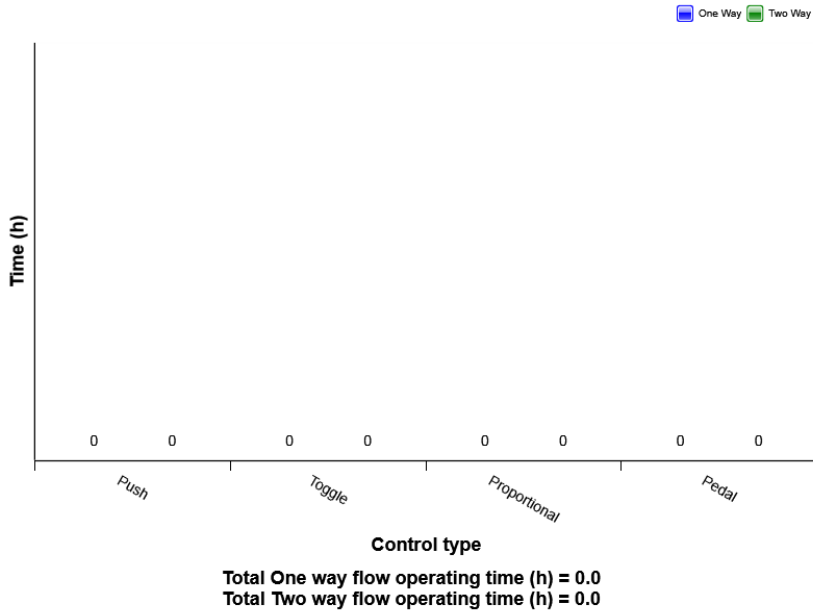
Criteria :

The criteria to get an registration, is that the alarm signal for high engine coolant temperature is active and that the diesel engine is running.

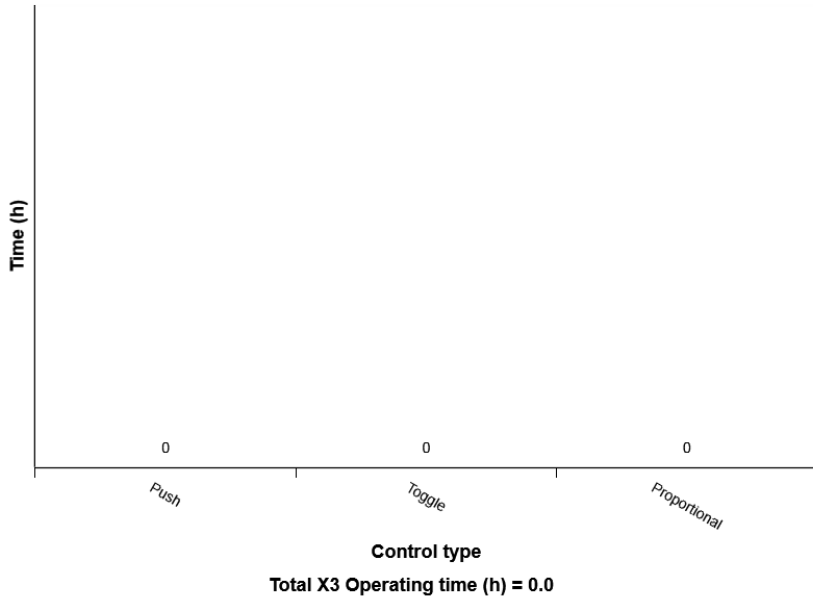


Machine model	SerialNo	Operating Hours	Reading Date
EC220D	210680	3007.9	8/22/2018

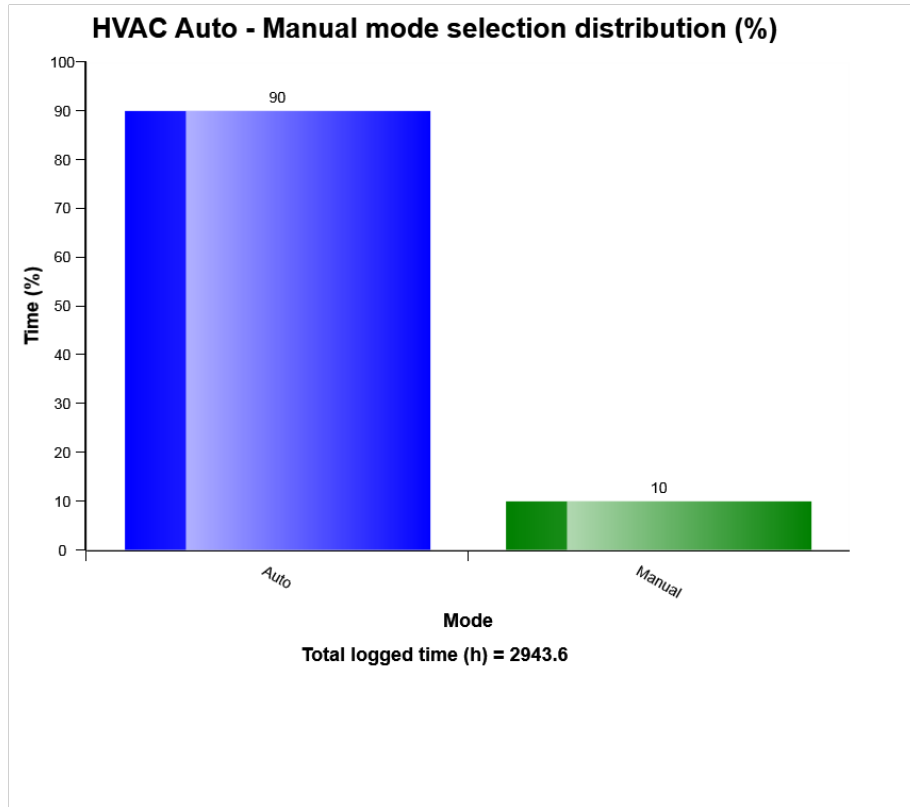
X1 control distribution



X3 Control distribution



Machine model	SerialNo	Operating Hours	Reading Date
EC220D	210680	3007.9	8/22/2018



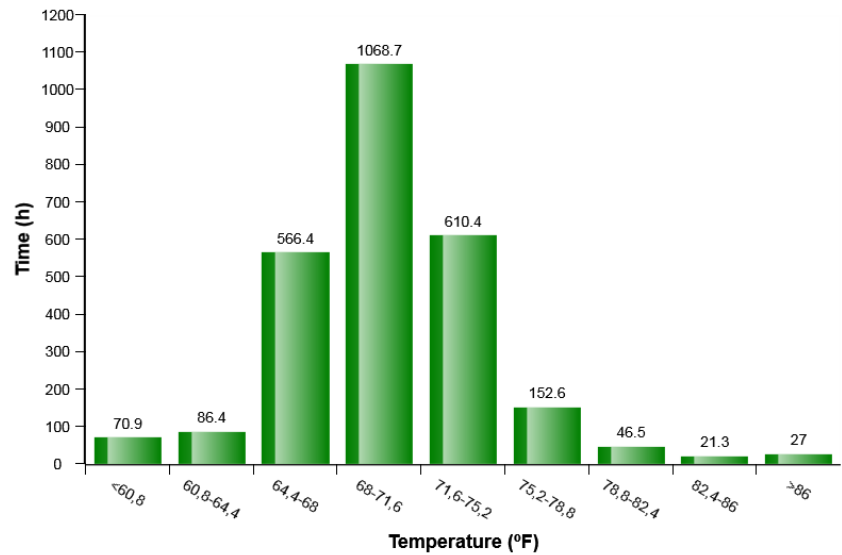
Definition:

The diagram describes auto-manual mode selection distribution of HVAC system in machine while it Works. The share of each mode compared to Total time of HVAC operation is displayed.



Machine model	SerialNo	Operating Hours	Reading Date
EC220D	210680	3007.9	8/22/2018

HVAC air temperature setting in auto control mode distribution (h)

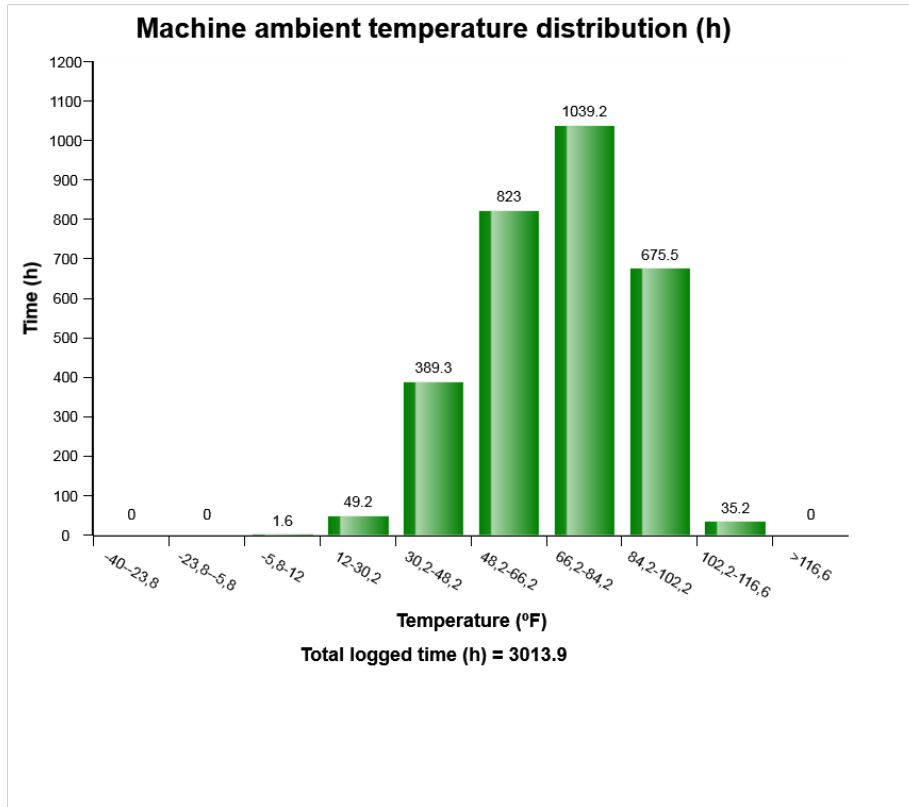


Definition:

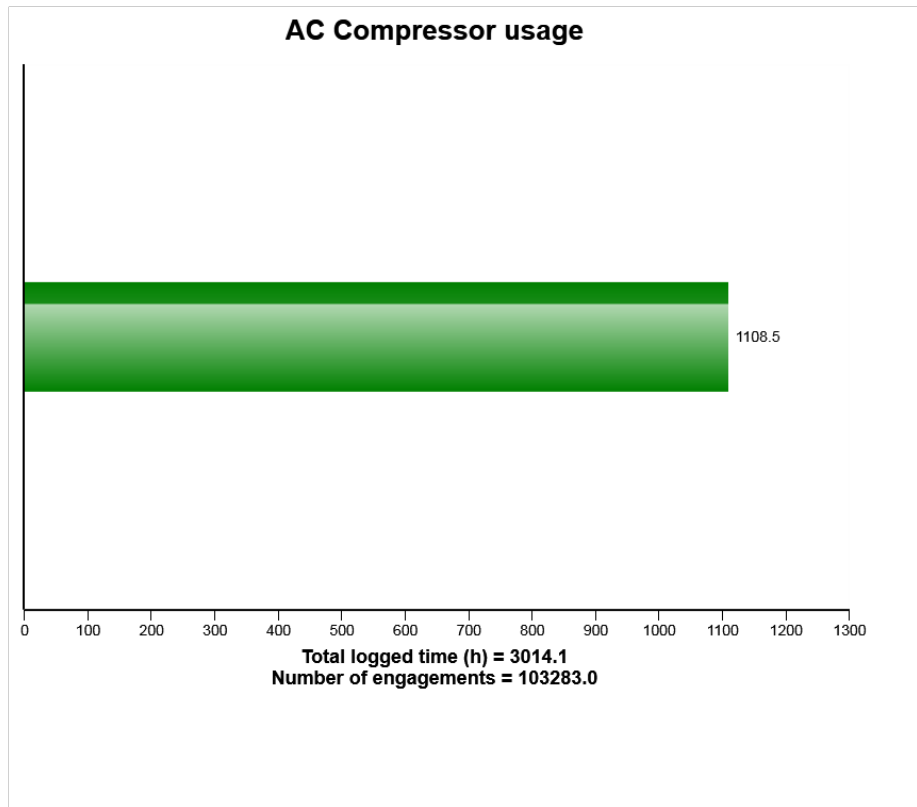
The diagram describes air temperature setting distribution for HVAC auto control mode established by operator in Cabin



Machine model	SerialNo	Operating Hours	Reading Date
EC220D	210680	3007.9	8/22/2018



Machine model	SerialNo	Operating Hours	Reading Date
EC220D	210680	3007.9	8/22/2018



Definition:

The graph shows the total time of AC compressor engagement.

Explanation:

Green bar: Total time in hours, AC compressor has been engaged.

Under the graph the total engine running time (in hours) is displayed.

Total number of AC compressor activations is also displayed.

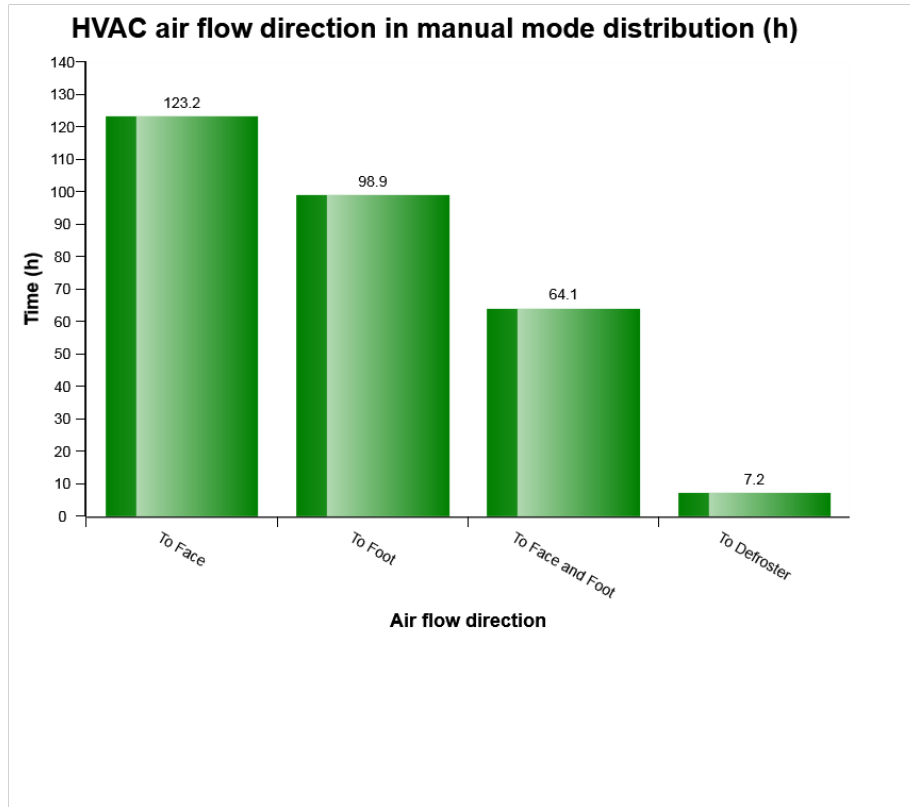


Machine model	SerialNo	Operating Hours	Reading Date
EC220D	210680	3007.9	8/22/2018

-



Machine model	SerialNo	Operating Hours	Reading Date
EC220D	210680	3007.9	8/22/2018

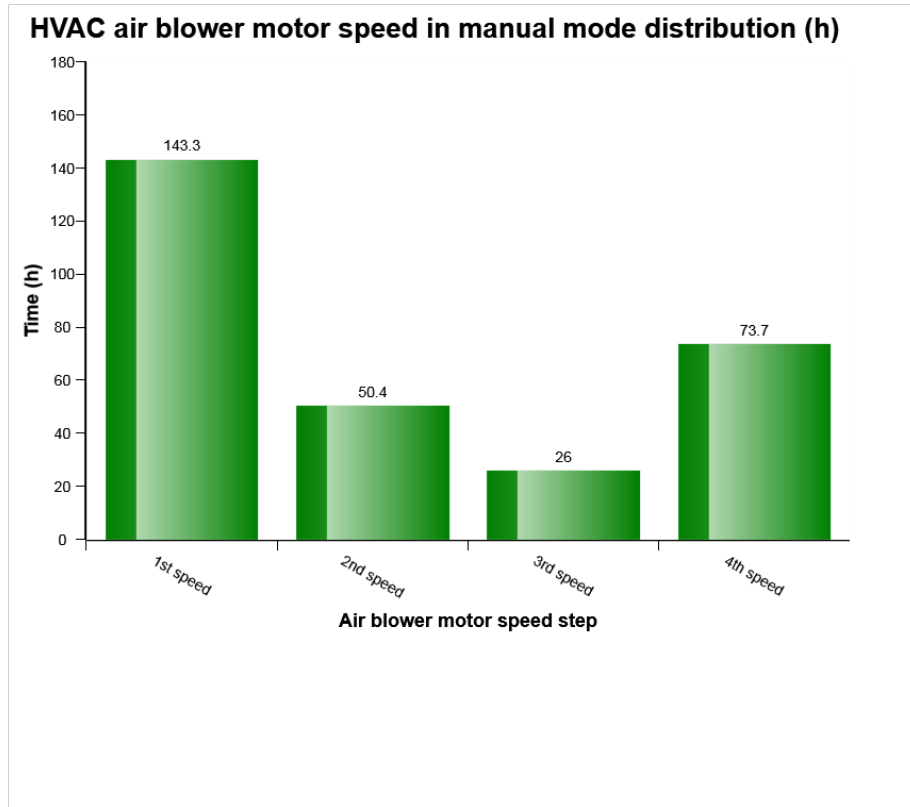


Definition:

The diagram describes air flow direction distribution for HVAC manual control mode established by operator in Cabin.



Machine model	SerialNo	Operating Hours	Reading Date
EC220D	210680	3007.9	8/22/2018



Definition:

The diagram describes air blower motor speed distribution for HVAC manual control mode established by operator in Cabin.



Machine model	SerialNo	Operating Hours	Reading Date
EC220D	210680	3007.9	8/22/2018

AC High Pressure
Total number of occurrences = 0

0	Year	Month	Day	Hours	Minute	Duration (sec)	Extreme (° F)
0	2000	0	0	0	0	0	32
0	2000	0	0	0	0	0	32
0	2000	0	0	0	0	0	32
0	2000	0	0	0	0	0	32
0	2000	0	0	0	0	0	32
0	2000	0	0	0	0	0	32
0	2000	0	0	0	0	0	32
0	2000	0	0	0	0	0	32
0	2000	0	0	0	0	0	32
0	2000	0	0	0	0	0	32
0	2000	0	0	0	0	0	32
0	2000	0	0	0	0	0	32
0	2000	0	0	0	0	0	32
0	2000	0	0	0	0	0	32
0	2000	0	0	0	0	0	32
0	2000	0	0	0	0	0	32
0	2000	0	0	0	0	0	32
0	2000	0	0	0	0	0	32
0	2000	0	0	0	0	0	32
0	2000	0	0	0	0	0	32
0	2000	0	0	0	0	0	32
0	2000	0	0	0	0	0	32

Definition :

This type of table shows the latest occasions when a specific event has occurred. When a specified criteria is fulfilled a registration is made. Each table row corresponds to one occasion. Operating



Machine model	SerialNo	Operating Hours	Reading Date
EC220D	210680	3007.9	8/22/2018

hours is displayed in the first column, followed by year, month , day , hour and minute to show when an event has occurred.

The rows are not ordered chronological (The latest event may be in the middle).

Only one event per minute is registered.

Over the table the total number of events is displayed

Duration :

The duration of each event is shown after the timestamp of the event.

The duration is counted as long as the criteria is fulfilled.

Extreme value :

The extreme value column displays the most extreme value during the event.

Criteria :

Logging is performed when, High AC Pressure signal is active. Ambient temp is viewed.



Machine model	SerialNo	Operating Hours	Reading Date
EC220D	210680	3007.9	8/22/2018

AC Boiling Protection Number of engagements = 0

Op hours	Year	Month	Day	Hour	Minute	Duration (sec)	Extreme (° F)
0	2000	0	0	0	0	0	32
0	2000	0	0	0	0	0	32
0	2000	0	0	0	0	0	32
0	2000	0	0	0	0	0	32
0	2000	0	0	0	0	0	32
0	2000	0	0	0	0	0	32
0	2000	0	0	0	0	0	32
0	2000	0	0	0	0	0	32
0	2000	0	0	0	0	0	32
0	2000	0	0	0	0	0	32
0	2000	0	0	0	0	0	32
0	2000	0	0	0	0	0	32
0	2000	0	0	0	0	0	32
0	2000	0	0	0	0	0	32
0	2000	0	0	0	0	0	32
0	2000	0	0	0	0	0	32
0	2000	0	0	0	0	0	32
0	2000	0	0	0	0	0	32
0	2000	0	0	0	0	0	32
0	2000	0	0	0	0	0	32
0	2000	0	0	0	0	0	32
0	2000	0	0	0	0	0	32
0	2000	0	0	0	0	0	32
0	2000	0	0	0	0	0	32

Definition :

This type of table shows the latest occasions when a specific event has occurred. When a specified criteria is fulfilled a registration is made. Each table row corresponds to one occasion. Operating



Machine model	SerialNo	Operating Hours	Reading Date
EC220D	210680	3007.9	8/22/2018

hours is displayed in the first column, followed by year, month , day , hour and minute to show when an event has occurred.

The rows are not ordered chronological (The latest event may be in the middle).

Only one event per minute is registered.

Over the table the total number of events is displayed

Duration :

The duration of each event is shown after the timestamp of the event.

The duration is counted as long as the criteria is fulfilled.

Extreme value :

The extreme value column displays the most extreme value during the event.

Criteria :

Logging is performed when, Boiling protection signal is active. Ambient temp is viewed.



Machine model	SerialNo	Operating Hours	Reading Date
EC220D	210680	3007.9	8/22/2018

**AC System Cut Out Pressure
Total number of occurrences = 2**

Op hours	Year	Month	Day	Hour	Minute	Duration (sec)	Extreme (° F)
0	2000	0	0	0	0	0	32
0	2000	0	0	0	0	0	32
0	2000	0	0	0	0	0	32
0	2000	0	0	0	0	0	32
0	2000	0	0	0	0	0	32
0	2000	0	0	0	0	0	32
0	2000	0	0	0	0	0	32
0	2000	0	0	0	0	0	32
0	2000	0	0	0	0	0	32
0	2000	0	0	0	0	0	32
0	2000	0	0	0	0	0	32
0	2000	0	0	0	0	0	32
0	2000	0	0	0	0	0	32
0	2000	0	0	0	0	0	32
0	2000	0	0	0	0	0	32
0	2000	0	0	0	0	0	32
0	2000	0	0	0	0	0	32
0	2000	0	0	0	0	0	32
0	2000	0	0	0	0	0	32
0	2000	0	0	0	0	0	32
0	2000	0	0	0	0	0	32
0	2000	0	0	0	0	0	32
0	2000	0	0	0	0	0	32
0	2000	0	0	0	0	0	32
0	2000	0	0	0	0	0	32
0	2000	0	0	0	0	0	32
928	2016	2	11	13	53	0	32
928	2016	2	11	12	13	1	16

Definition :

This type of table shows the latest occasions when a specific event has occurred. When a specified criteria is fulfilled a registration is made. Each table row corresponds to one occasion. Operating



Machine model	SerialNo	Operating Hours	Reading Date
EC220D	210680	3007.9	8/22/2018

hours is displayed in the first column, followed by year, month , day , hour and minute to show when an event has occurred.

The rows are not ordered chronological (The latest event may be in the middle).

Only one event per minute is registered.

Over the table the total number of events is displayed

Duration :

The duration of each event is shown after the timestamp of the event.

The duration is counted as long as the criteria is fulfilled.

Extreme value :

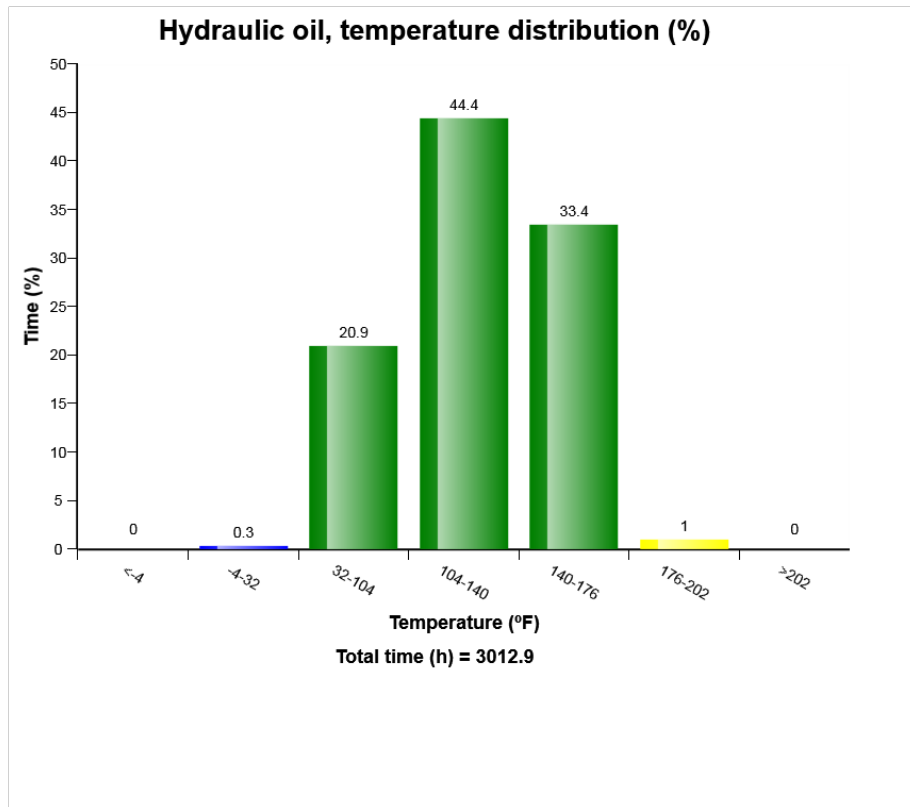
The extreme value column displays the most extreme value during the event.

Criteria :

Logging is performed when, AC cut out pressure signal is active. Ambient temp is viewed.



Machine model	SerialNo	Operating Hours	Reading Date
EC220D	210680	3007.9	8/22/2018



Definition:

The graph shows the time distribution of the temperature, while engine running.

Explanation:

Y-axis: Time

X-axis: Temperature distribution in classes.

Blue bar = Warm-up phase.

During the engine warm-up phase, this temperature region is passed.



Machine model	SerialNo	Operating Hours	Reading Date
EC220D	210680	3007.9	8/22/2018

It is normal to have registrations in this region.

Green bar = Normal working temperature. The Major part of the registrations shall be in this region.

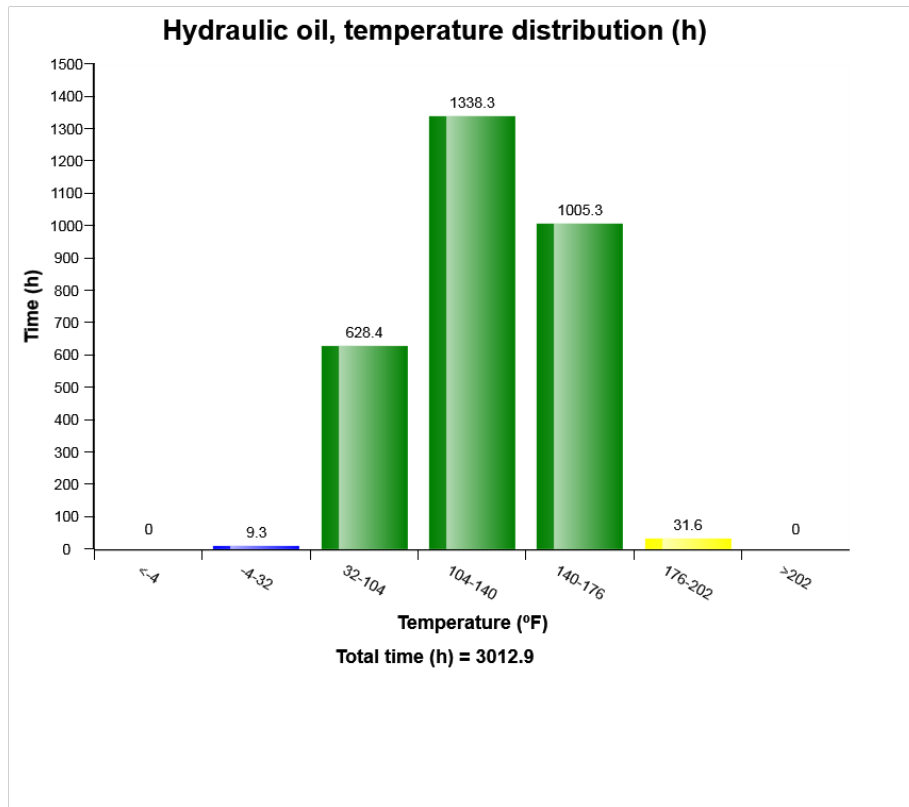
Yellow bar = High working temperature. It is normal to have some registrations in this region.

Red bar = Alarm.

Registrations in this region is not normal, running in this region may cause severe damage.



Machine model	SerialNo	Operating Hours	Reading Date
EC220D	210680	3007.9	8/22/2018



Definition:

The graph shows the time distribution of the temperature, while engine running.

Explanation:

Y-axis: Time

X-axis: Temperature distribution in classes.

Blue bar = Warm-up phase.

During the engine warm-up phase, this temperature region is passed.



Machine model	SerialNo	Operating Hours	Reading Date
EC220D	210680	3007.9	8/22/2018

It is normal to have registrations in this region.

Green bar = Normal working temperature. The Major part of the registrations shall be in this region.

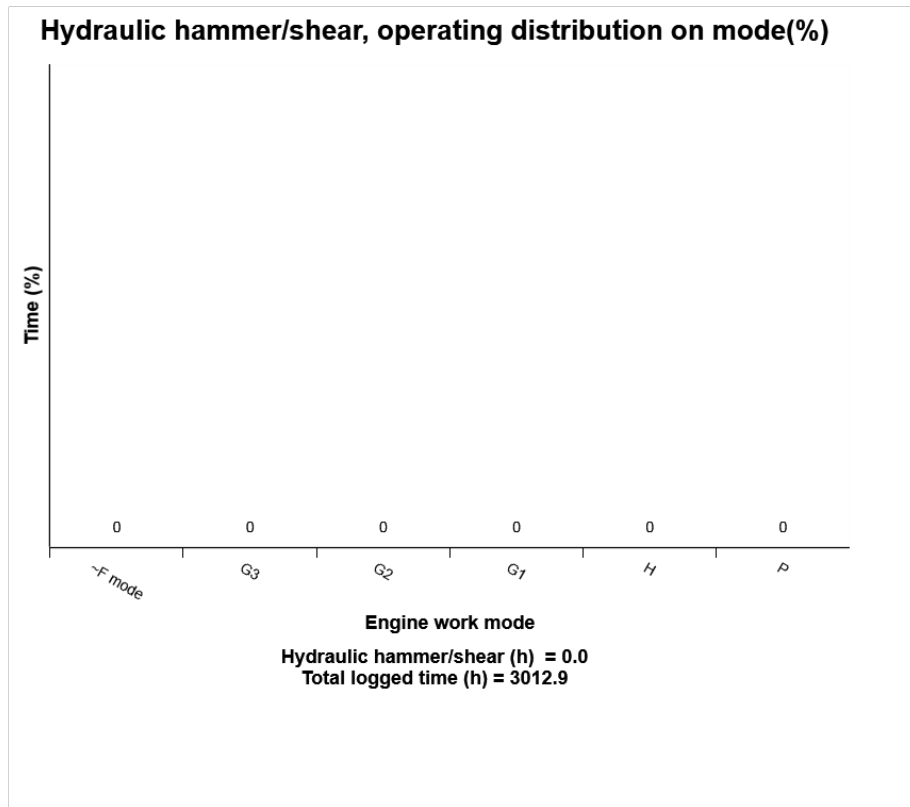
Yellow bar = High working temperature. It is normal to have some registrations in this region.

Red bar = Alarm.

Registrations in this region is not normal, running in this region may cause severe damage.



Machine model	SerialNo	Operating Hours	Reading Date
EC220D	210680	3007.9	8/22/2018



Definition:

The graph describes the operating hours (%) for hydraulic hammer/shears on each engine control mode .

Recommended to use green column mode of the hammer operation.

I2 = Idle 2

I1 = Idle 1

F3= Fine control 3

F2= Fine control 2



Machine model	SerialNo	Operating Hours	Reading Date
EC220D	210680	3007.9	8/22/2018

F1= Fine control 1

G3 = General 3

G2 = General 2

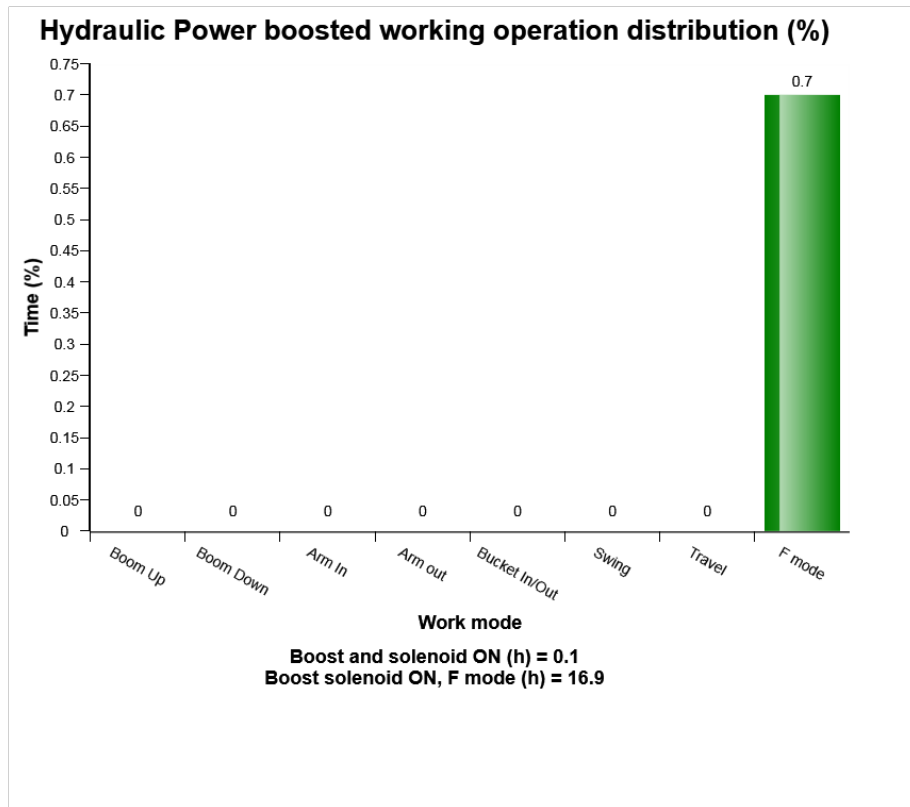
G1 = General 1

H = Heavy Duty

P = Power max



Machine model	SerialNo	Operating Hours	Reading Date
EC220D	210680	3007.9	8/22/2018



Definition:

The diagram describes Power boosted operating time distribution, when main relief pressure increases on working operation modes. In this diagram, the sum of time (%) of each working operation mode can exceed 100%. It means that customer has been operated several working operations at the same time.

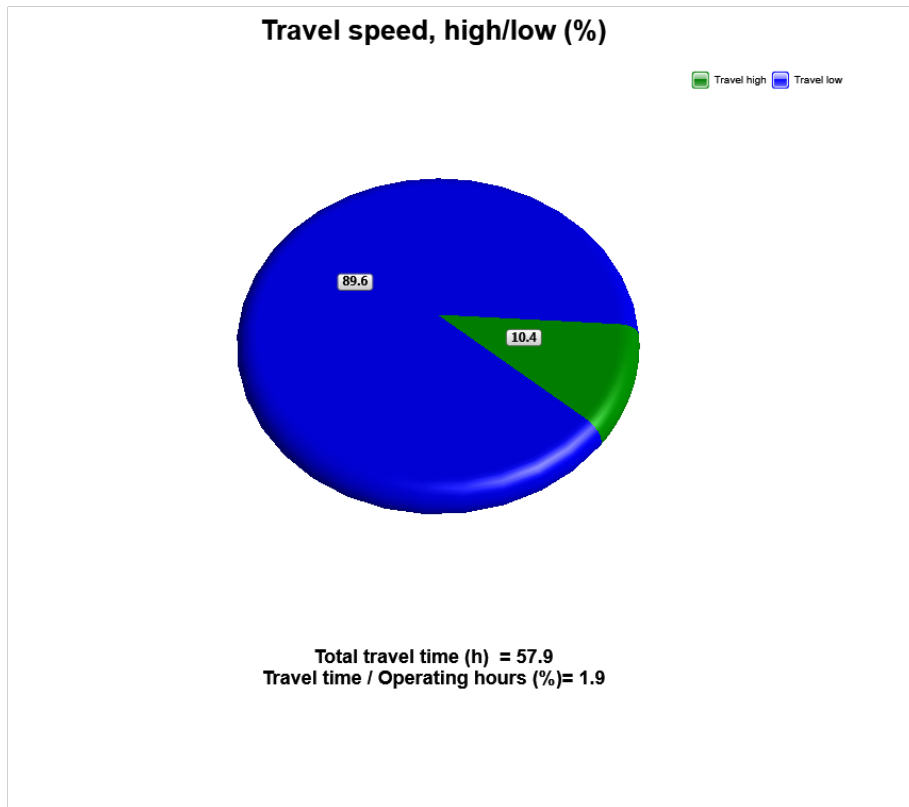
Total operating time with power boosted (hours) in above means sum of the time for Hydraulic Power boosted operation. The base for the percentage calculation is Total operating time with power boost. Time(%) on each working operation mode except travel and F mode above is the time, after the operator press power boost button on the joystick and until main relief pressure is recovered to default pressure.



Machine model	SerialNo	Operating Hours	Reading Date
EC220D	210680	3007.9	8/22/2018



Machine model	SerialNo	Operating Hours	Reading Date
EC220D	210680	3007.9	8/22/2018



Definition:

This graph shows operating hour distributions on each travel speed for total travel time.

Blue sector: Travel switch in low position

Green sector: Travel switch in high position

Explanation:

Distribution of each travel time is shown on right of its sector in percentage

The sum of travel time in percentage is 100

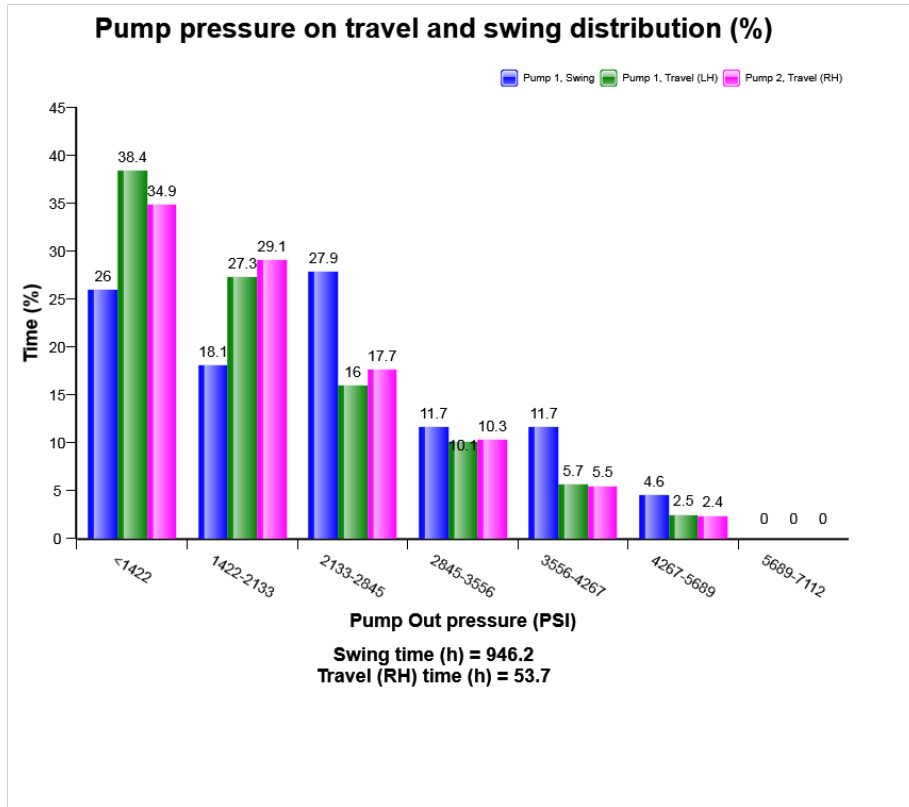


Machine model	SerialNo	Operating Hours	Reading Date
EC220D	210680	3007.9	8/22/2018

Total travel time is listed below the diagram



Machine model	SerialNo	Operating Hours	Reading Date
EC220D	210680	3007.9	8/22/2018

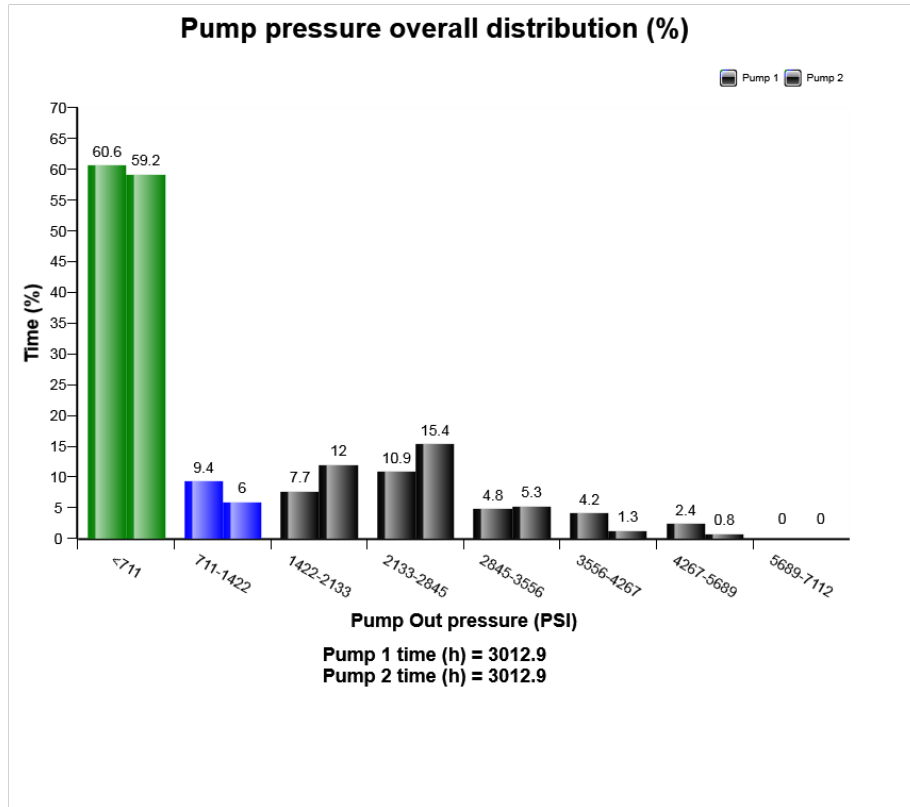


Definition:

The diagram describes Pump outlet pressure of 2 Pumps for travel and swing operation distribution. In case operator use several operations at the same time, this pressure distribution for travel and swing operation can be different from actual operating pressure distribution for travel and swing operation in field.



Machine model	SerialNo	Operating Hours	Reading Date
EC220D	210680	3007.9	8/22/2018

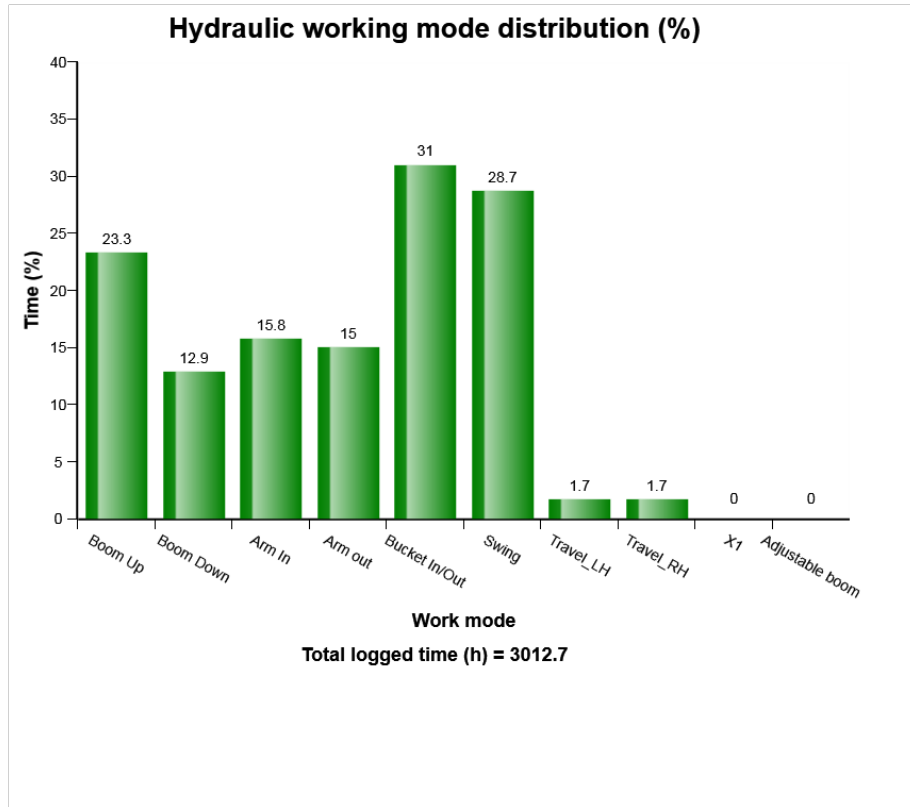


Definition:

The diagram describes Pump outlet pressure of 2 Pumps distribution.



Machine model	SerialNo	Operating Hours	Reading Date
EC220D	210680	3007.9	8/22/2018



Definition:

The diagram describes hydraulic working operation mode distribution.



Machine model	SerialNo	Operating Hours	Reading Date
EC220D	210680	3007.9	8/22/2018

High hydraulic oil temperature
Total number of occurrences = 0

Op hours	Year	Month	Day	Hour	Minute	Duration (sec)	Extreme (° F)
0	2000	0	0	0	0	0	32
0	2000	0	0	0	0	0	32
0	2000	0	0	0	0	0	32
0	2000	0	0	0	0	0	32
0	2000	0	0	0	0	0	32
0	2000	0	0	0	0	0	32
0	2000	0	0	0	0	0	32
0	2000	0	0	0	0	0	32
0	2000	0	0	0	0	0	32
0	2000	0	0	0	0	0	32
0	2000	0	0	0	0	0	32
0	2000	0	0	0	0	0	32
0	2000	0	0	0	0	0	32
0	2000	0	0	0	0	0	32
0	2000	0	0	0	0	0	32
0	2000	0	0	0	0	0	32
0	2000	0	0	0	0	0	32
0	2000	0	0	0	0	0	32
0	2000	0	0	0	0	0	32
0	2000	0	0	0	0	0	32
0	2000	0	0	0	0	0	32
0	2000	0	0	0	0	0	32
0	2000	0	0	0	0	0	32
0	2000	0	0	0	0	0	32
0	2000	0	0	0	0	0	32
0	2000	0	0	0	0	0	32

Definition :

This type of table shows the latest occasions when a specific event has occurred. When a specified criteria is fulfilled a registration is made. Each table row corresponds to one occasion. Operating



Machine model	SerialNo	Operating Hours	Reading Date
EC220D	210680	3007.9	8/22/2018

hours is displayed in the first column, followed by year, month , day , hour and minute to show when an event has occurred.

The rows are not ordered chronological (The latest event may be in the middle).

Only one event per minute is registered.

Over the table the total number of events is displayed

Duration :

The duration of each event is shown after the timestamp of the event.

The duration is counted as long as the criteria is fulfilled.

Extreme value :

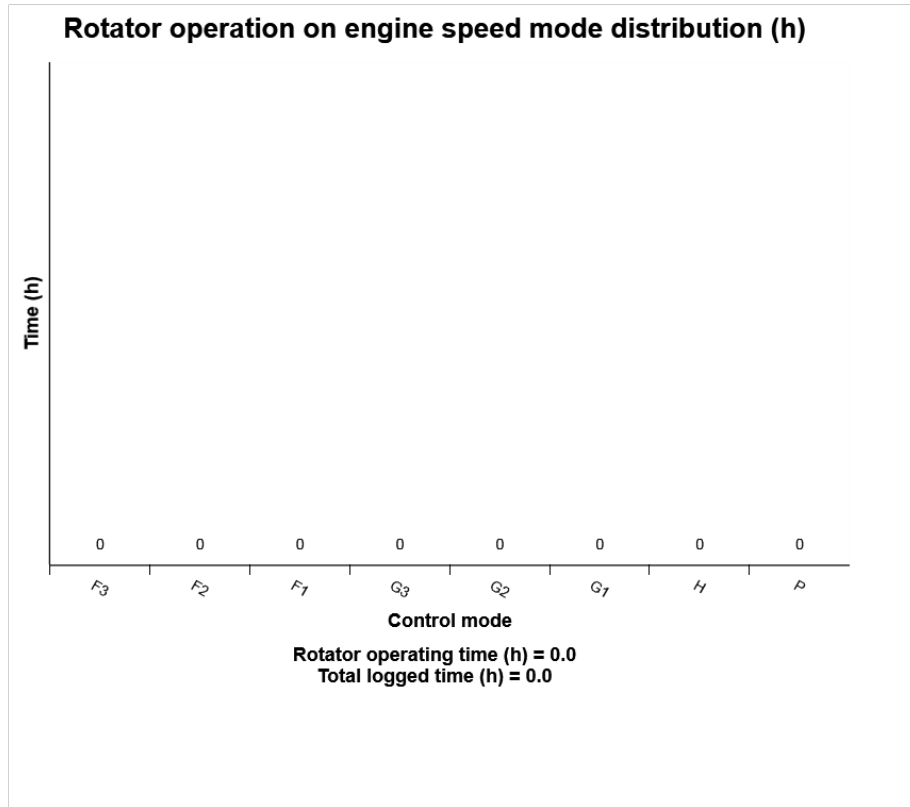
The extreme value column displays the most extreme value during the event.

Criteria :

Logging is performed when, Alarm high hydraulic oil temperature , is active.



Machine model	SerialNo	Operating Hours	Reading Date
EC220D	210680	3007.9	8/22/2018

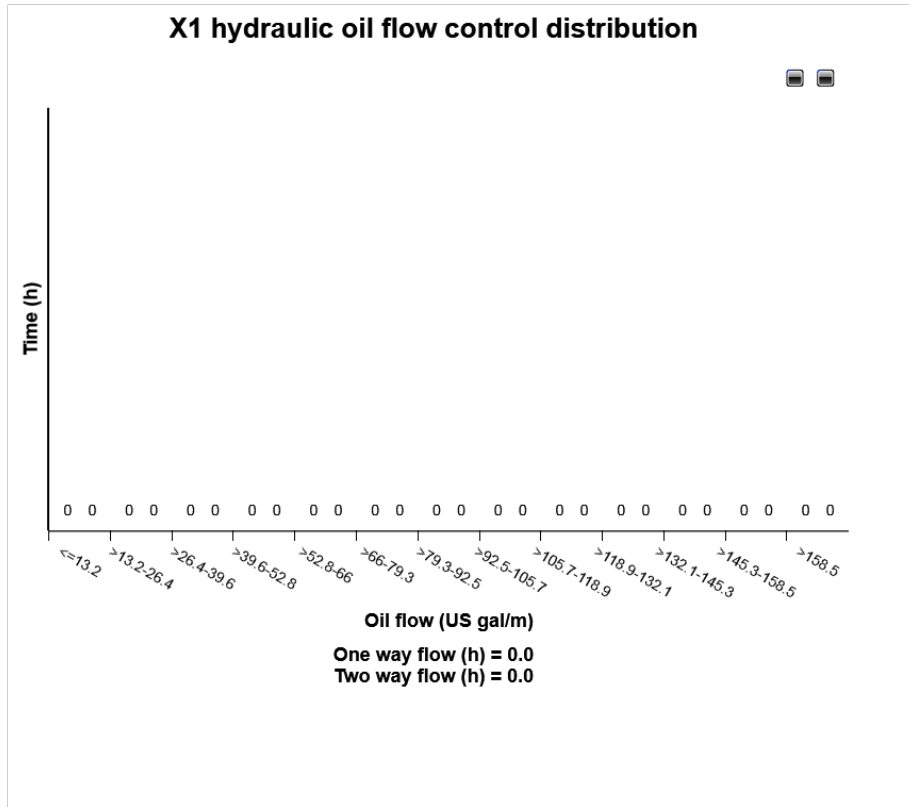


Definition:

The diagram describes the distribution of Rotator operating hours on mode.



Machine model	SerialNo	Operating Hours	Reading Date
EC220D	210680	3007.9	8/22/2018



Definition:

The diagram describes X1 hydraulic oil flow control distribution of the machine while machine operates.

